



Sustaining Conserved Lands: On Community Stewardship



 Land Trust Alliance
Together, conserving the places you love





- Increase the **PACE** of conservation
- Enhance the **QUALITY** of conservation
- Ensure the **PERMANENCE** of conservation





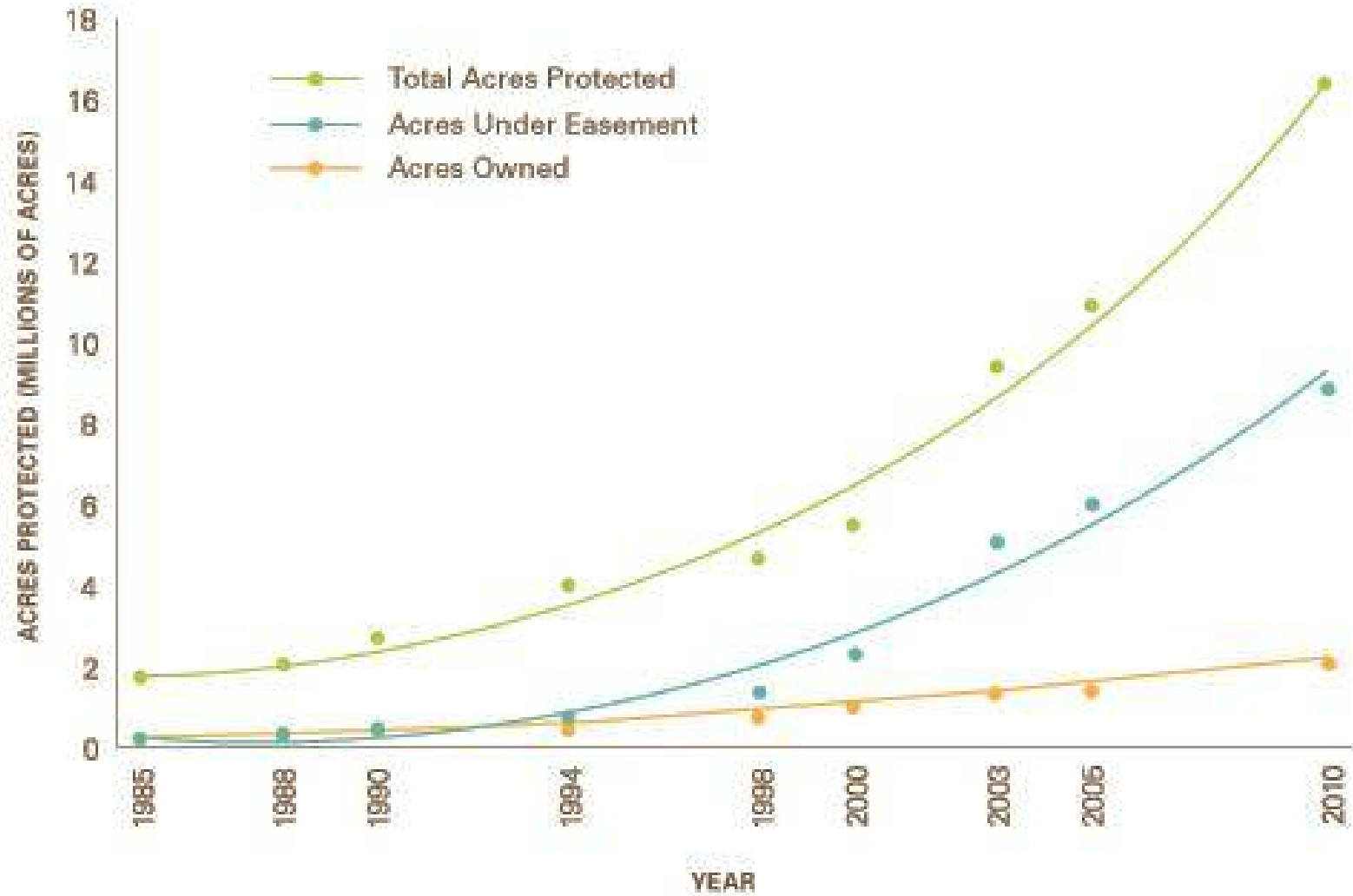
In other words,

- **FASTER**
- **STRONGER**
- **SMARTER**



Land Trust Alliance
Together, conserving the places you love

Private Land Conservation by State and Local Land Trusts



2010 Land Trust Census

New York 's 90+ land trusts own >1,060 properties on 167,000+ acres.

These groups hold and enforce >2,200 conservation easements on another 282,000+ acres.

Land trusts have facilitated acquisitions for local, county and state agencies on several thousand additional acres.

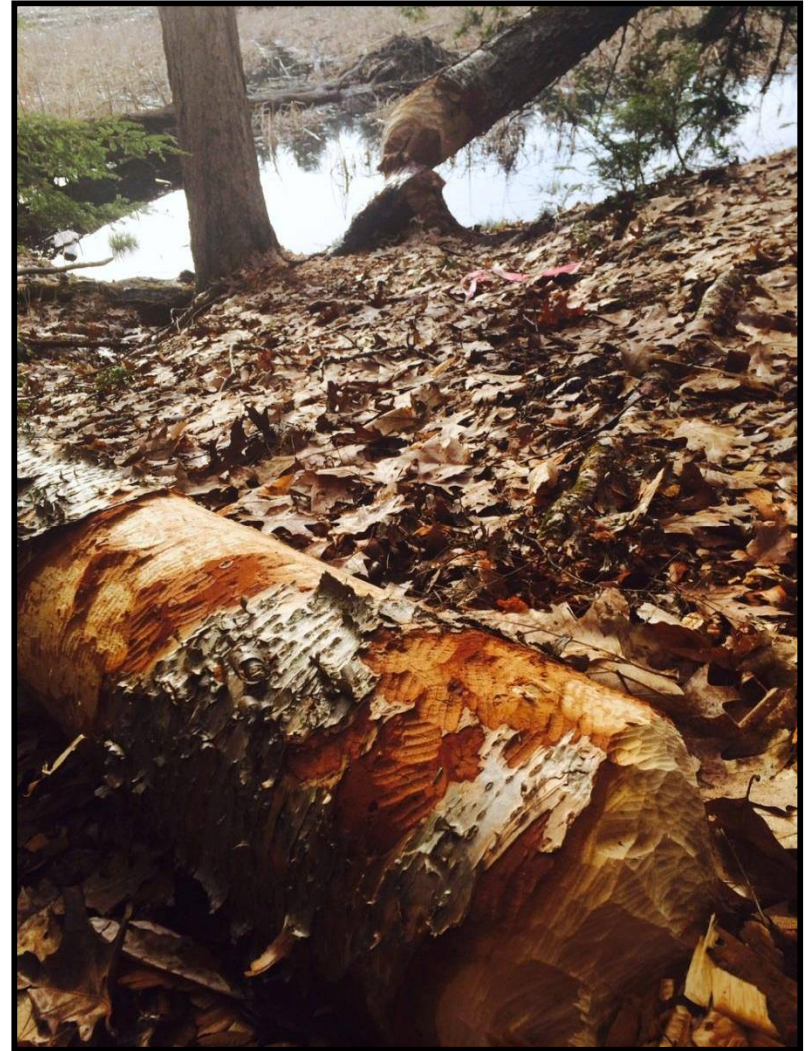
In all, land trusts in New York had conserved 973,800 acres by 2010.

88% increase in lands conserved since 2005.

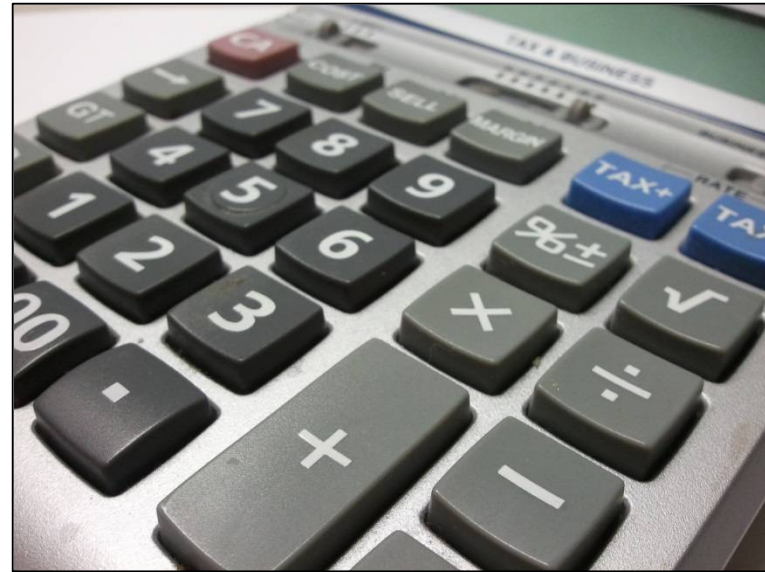




What is Stewardship?



What is Stewardship?



Beyond Standards & Practices, Management Plans and the Case Law



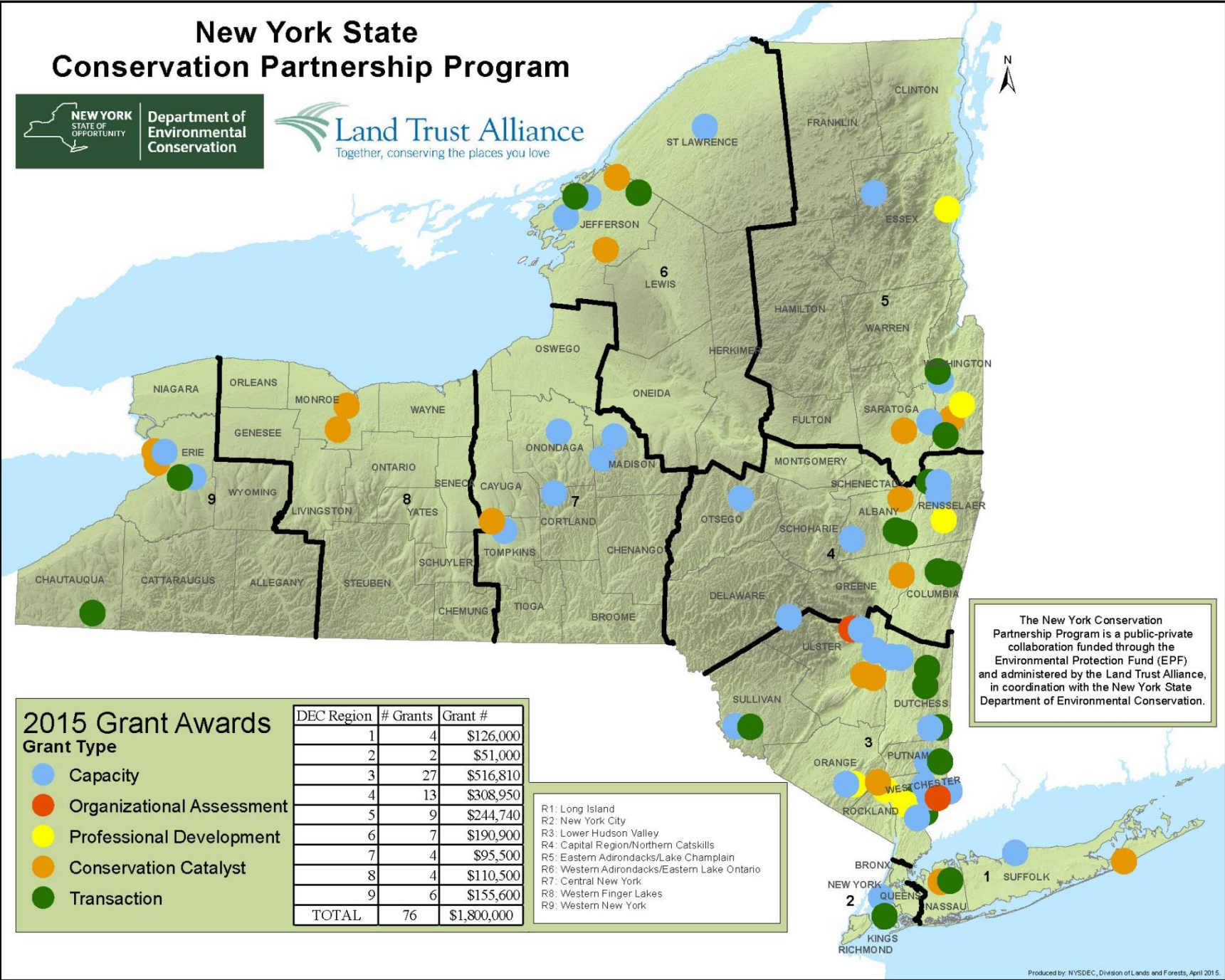
We know the What of Stewardship. What about the Who?



We know the What of Stewardship. What about the Who?



New York State Conservation Partnership Program



The New York Conservation Partnership Program is a public-private collaboration funded through the Environmental Protection Fund (EPF) and administered by the Land Trust Alliance, in coordination with the New York State Department of Environmental Conservation.

2015 Grant Awards

- Grant Type**
- Capacity
 - Organizational Assessment
 - Professional Development
 - Conservation Catalyst
 - Transaction

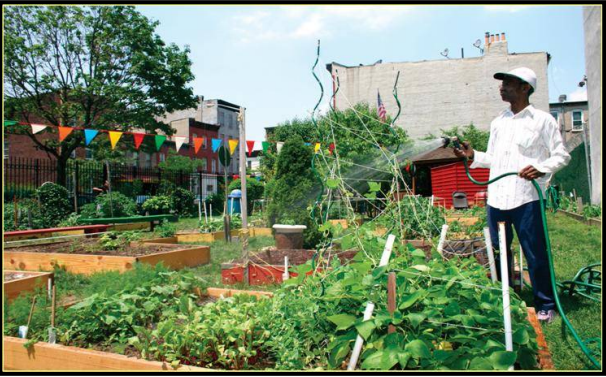
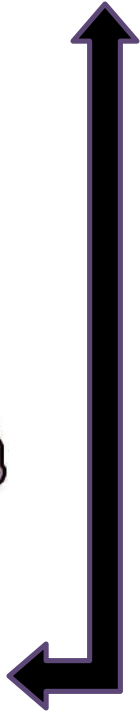
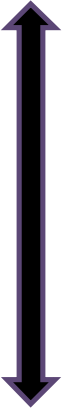
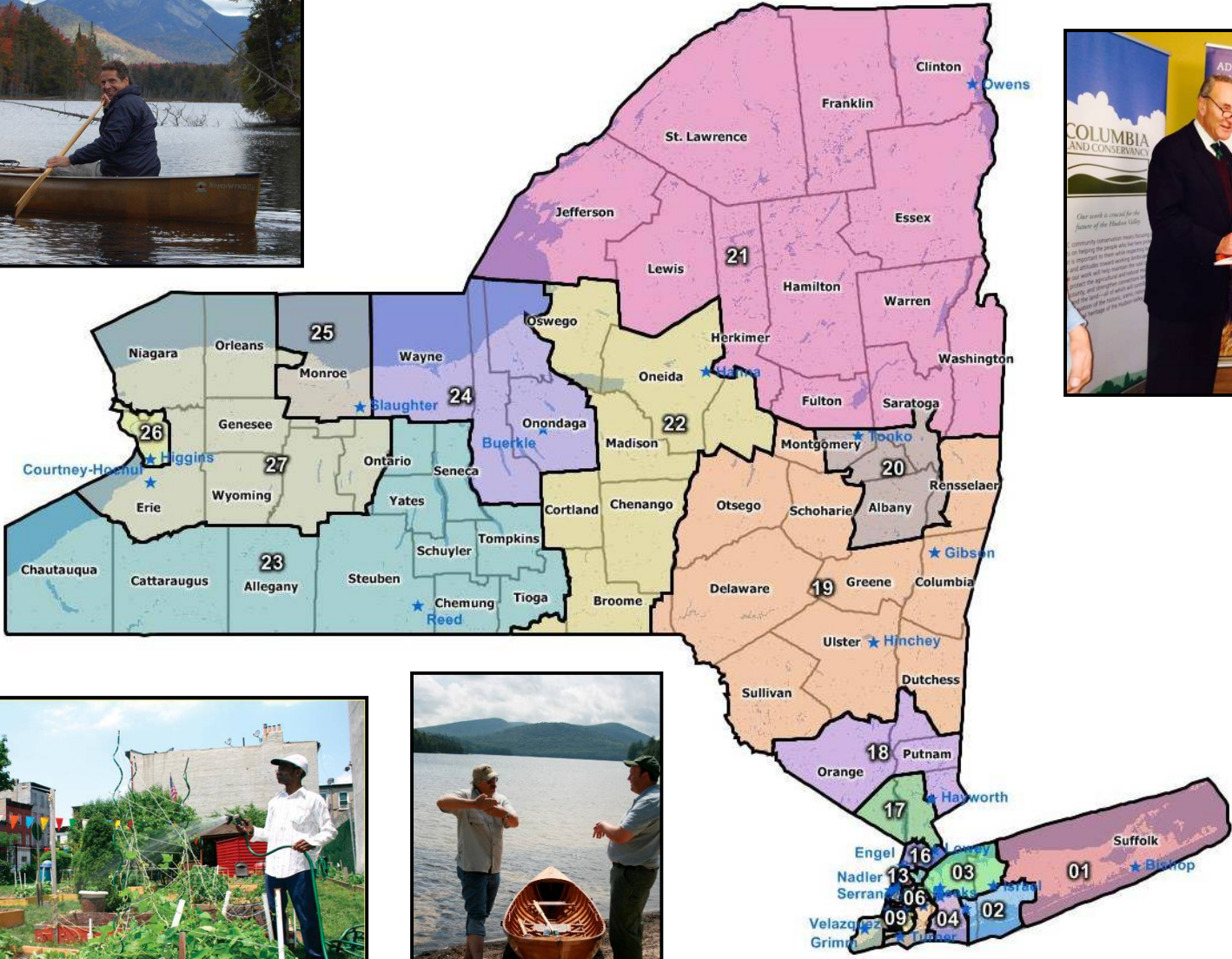
| DEC Region | # Grants | Grant # |
|--------------|-----------|--------------------|
| 1 | 4 | \$126,000 |
| 2 | 2 | \$51,000 |
| 3 | 27 | \$516,810 |
| 4 | 13 | \$308,950 |
| 5 | 9 | \$244,740 |
| 6 | 7 | \$190,900 |
| 7 | 4 | \$95,500 |
| 8 | 4 | \$110,500 |
| 9 | 6 | \$155,600 |
| TOTAL | 76 | \$1,800,000 |

- R1: Long Island
- R2: New York City
- R3: Lower Hudson Valley
- R4: Capital Region/Northern Catskills
- R5: Eastern Adirondacks/Lake Champlain
- R6: Western Adirondacks/Eastern Lake Ontario
- R7: Central New York
- R8: Western Finger Lakes
- R9: Western New York

State Funding & Policy



Federal Funding & Policy



All Stewardship is Local

Managing for Resilience: “Community Stewardship”





Ethan Winter
ewinter@lta.org
(518) 587 - 0774



 **Land Trust Alliance**
 Together, conserving the places you love

