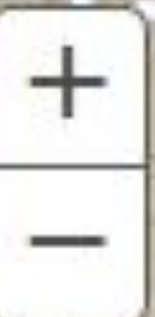
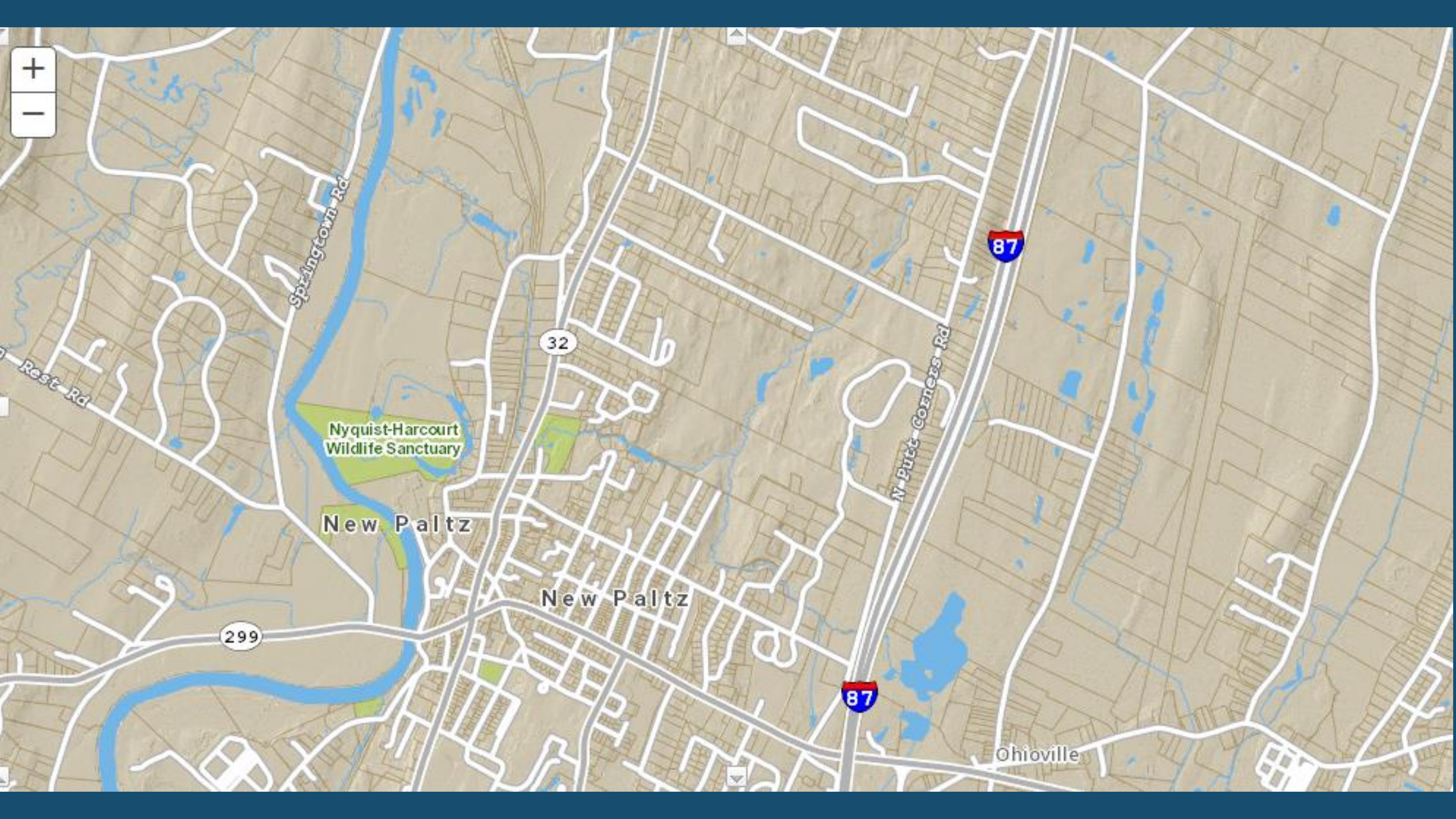


# HUDSON VALLEY CONNECTIVITY CASE STUDY: NEW PALTZ'S MILL BROOK PRESERVE





Springtown Rd

Rest Rd

Nyquist-Harcourt  
Wildlife Sanctuary

New Paltz

32

New Paltz

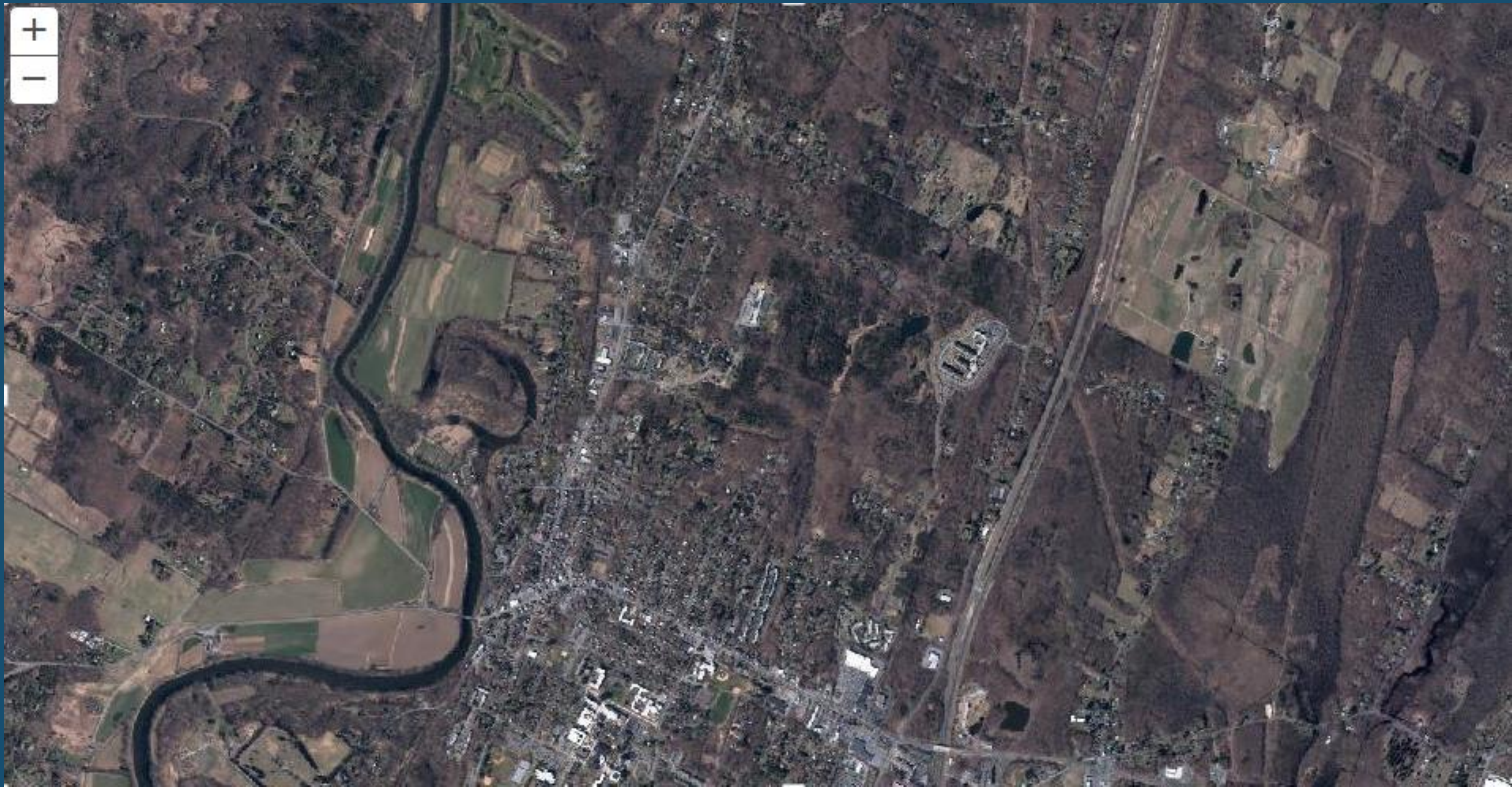
299

N. Putt-Corners Rd

87

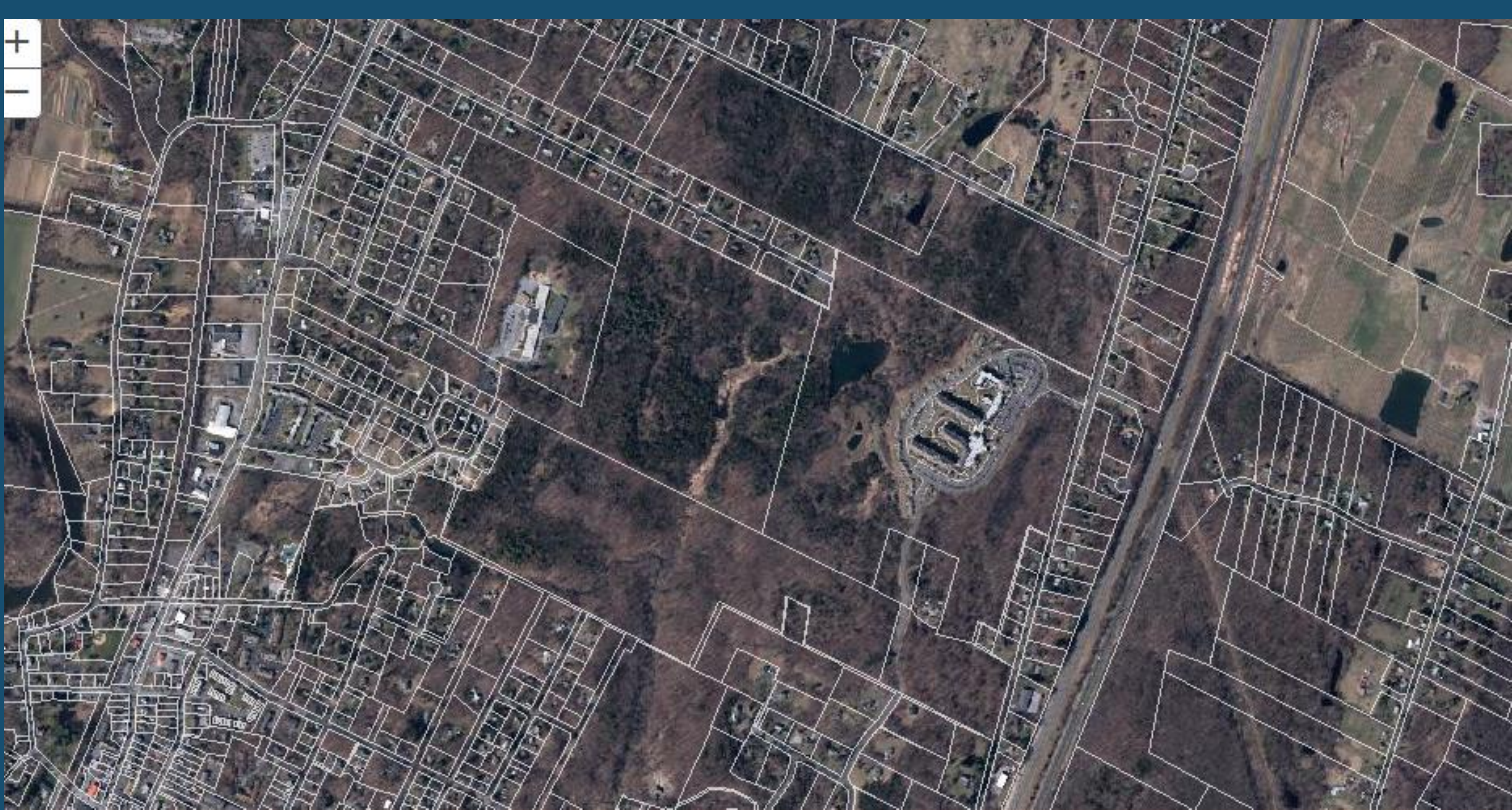
87

Ohioville



+

-



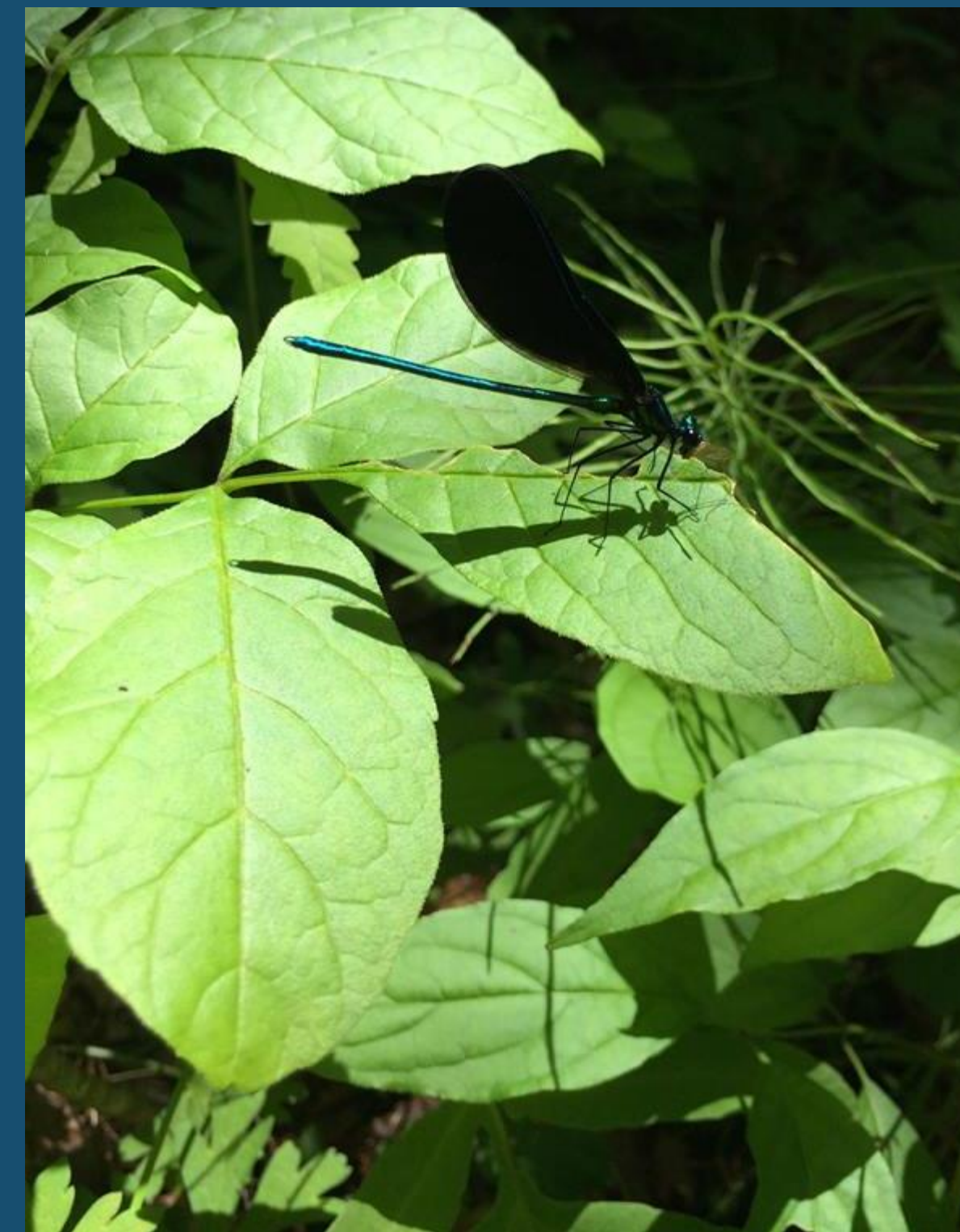












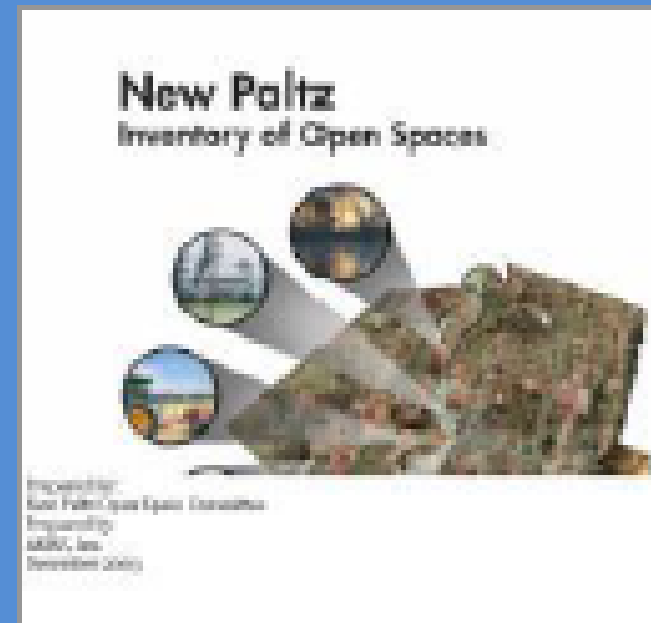


# Open Space Timeline

2000

New Paltz  
Open Space  
Committee  
Formed

Inventory of  
Open Spaces



2004

Community  
Survey

Open Space Plan



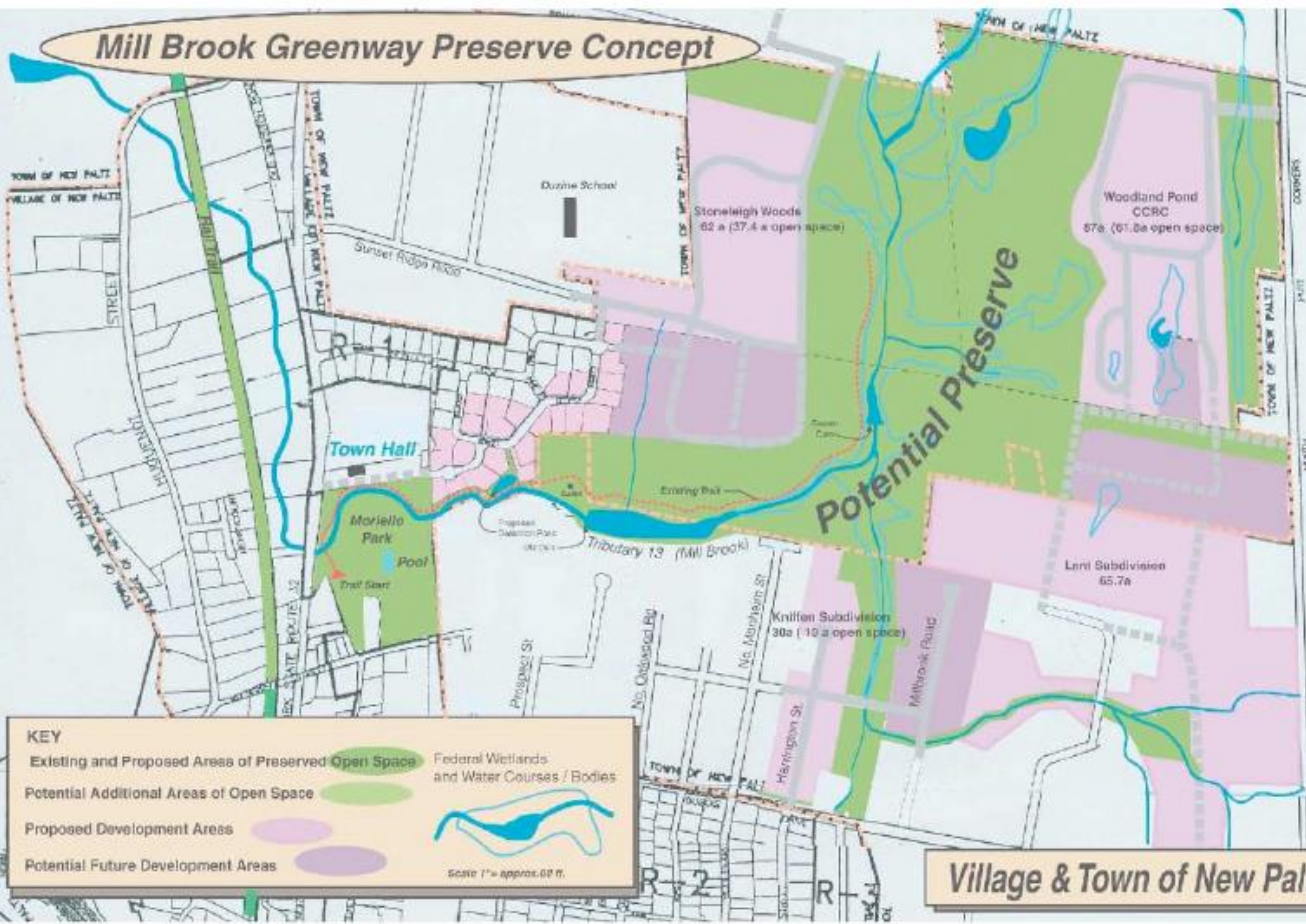
Build-out  
Fiscal  
Analysis

Bond

Clean Water  
and Open Space  
Protection  
Commission

2008

# Mill Brook Greenway Preserve Concept



**KEY**

- Existing and Proposed Areas of Preserved Open Space
- Potential Additional Areas of Open Space
- Proposed Development Areas
- Potential Future Development Areas

Federal Wetlands and Water Courses / Bodies

Scale 1" = approx. 60 ft.

Village & Town of New Paltz

# New Paltz Open Space Plan

## *A Framework for Conservation*



For the Town and Village of New Paltz, New York

*May 2006*

Prepared by Behan Planning Associates, LLC







# New Paltz Community Open Space Vision Map

## Shawangunk Ridge

Key wildlife corridor and a fragmented high-quality habitat west of the "herring slope"

- Partner with landowners and conservation organizations to permanently protect remaining ridge habitat not currently part of the Mohonk Preserve
- Protect ridge views (views to and from the ridge) from the impacts of new development
- Connect habitat corridors to adjacent lands

## Scenic Landscapes

Rural, traditional and historic character: views from scenic roads, rural hamlets, historic cultural landscapes and traditional village settlement pattern (located throughout Town)

- Protect the "village-to-ridge" scenic gateway (Route 299 and beyond)
- Protect and expand access (visual and/or physical) to scenic vistas and historic and cultural landmarks
- Maintain and protect scenic roadway corridors throughout the Town
- Protect the character of historic hamlet and settlement areas

## Butterville-Canaan Foothills

Woodlands and open lands at the base of the ridge

- Conserve active farmlands and agricultural heritage
- Utilize conservation design for new development to maintain open lands and views
- Develop transition "buffer" in land use along break-in-slope

## Walkkill Flats and River Corridor

Farms, floodplain and tributaries in the heart of the valley that serve as a primary wildlife corridor and greenbelt

- Conserve river-edge forest habitat
- Expand passive recreation (kayaking and canoeing, etc.) and trail links
- Conserve floodplain for farming production

## North Woods and Eastern Wetlands

Large natural areas and wildlife corridors (forest, woodlands, streams and wetlands)

- Protect large "patches" of habitat; minimize fragmentation of woodlands and wetlands
- Protect the aquifer as an important water supply
- Create a greenbelt along the Town's eastern edge
- Utilize conservation design for new development; use model of cooperative partnership (eg. Mill Brook Preserve)
- Conserve scenic views and farmlands

## Mill Brook Preserve Concept

## Heart of New Paltz

Greenways and connections between major population centers such as the Village center and Town neighborhoods, linking people to the Town's many natural and cultural resources

- Strengthen Village center as the "heart of the town" and a place with unique character
- Expand connections between the Village and the Town's open space and recreational amenities
- Safeguard key parcels and linkages, such as within the Mill Brook Preserve area
- Protect Town and Village gateways

## Orchards, Farms and Ridge-views

Critical mass of active farmland and open lands east of the Walkkill River

- Protect and promote active farmlands as key components of the Town's economy, rural character, and scenic quality, and for their open space and tourism value
- Adopt regulatory tools to accommodate activities that support agriculture
- If development is to occur on farmlands, seek to minimize impacts through conservation design; obtain open space and trail amenities as feasible

### Vision Map Legend

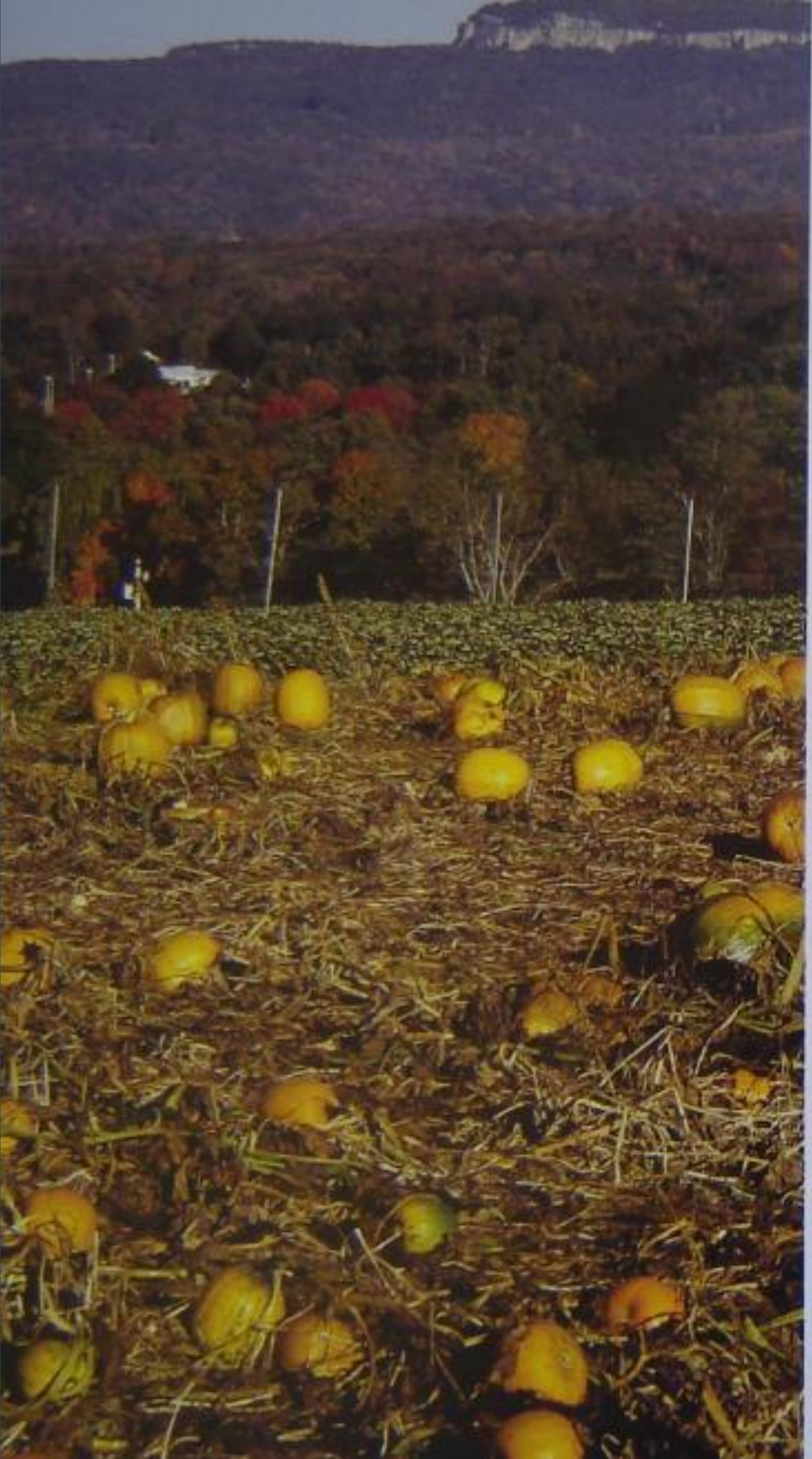
- Major Historic Landmark
- Major Natural Landmark
- Core Farming Area
- Core Farming Area in Walkkill Plains
- Rural Hamlet
- Walkkill Rail Trail
- Scenic Roadway
- Greenway Connection



December 2008  
Copyright Brian Planning Associates, LLC  
Prepared as part of the New Paltz Open Space Plan

Brian Planning Associates, LLC  
Planning Community Partners





## **Vote “Yes” to Protect New Paltz Drinking Water Sources**

“PROPOSAL NUMBER FIVE” will provide funds to purchase land to that protects drinking water sources that are vital to providing clean, safe drinking water for our families. By voting “Yes” on the proposal, you are voting “Yes” to protect our drinking water sources.

## **Protecting the Water Quality of Rivers and Streams**

Our rivers and streams in New Paltz are an important part of our quality of life. A “Yes” vote for “PROPOSAL NUMBER FIVE” is a “Yes” vote to protect the water quality of our rivers and streams.

## **Preserving Open Space from Development**

Because development can lead to a dramatic increase in the need for local government services such as schools, roads, sewers, police, and fire preserving open space can help keep taxes from going up.

## **Annual Public Audit to Ensure Funds are Properly Spent**

The proposal mandates an annual public audit of how funds are spent. Land will **only** be purchased from **willing sellers** on a voluntary basis.



Search



[EMERGENCY PREPAREDNESS](#)

[DIRECTORY](#)

[WHERE DO I GO FOR?](#)

[DOCUMENT CENTER](#)

[FAQ](#)

## LINKS

- [CWOSP FAQ](#)
- [Conservation Project Rating Form](#)
- [Future of the Wallkill River Conference - April 23, 2015](#)
- [Landowner Conservation Interest Application Form](#)
- [Mill Brook Preserve Management Plan](#)
- [New Paltz Farmland Preservation Plan](#)
- [Open Space Plan 2006](#)

Home › Committees › Clean Water and Open Space Protection Commission

# CLEAN WATER AND OPEN SPACE PROTECTION COMMISSION

*(CWOSP; formerly known as the Open Space Committee)*



## CLEAN WATER AND OPEN SPACE PROTECTION COMMISSION CALENDAR

« **November** »

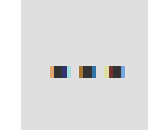
S	M	T	W	T	F	S	
				1	2	3	4
5	6	7	8	9	10	11	
12	13	14	15	16	17	18	
19	20	21	22	23	24	25	
26	27	28	29	30			

more...



## Alert: Two die in Ulster County ATV accident

[Home](#) [News](#)



## New Paltz buys 63-acre site for \$550,000

By WILLIAM J. KEMBLE

POSTED: 08/31/10, 4:51 PM EDT | UPDATED: ON 08/31/2010

0 COMMENTS

NEW PALTZ -- Town officials have completed the \$550,000 purchase of the 63.23-acre site previously considered for a housing development behind Duzine Elementary School.

The closing was held last week and ended four years of concern the former Stoneleigh Woods development plan would have created 300 units in the village without completely addressing impact on town services.

"The town through the Open Space Committee and the cooperation of the land owners have made an agreement to purchase it through the open space bond," town Supervisor Toni Hokanson said.

"They had gone through the Planning Board process at the village level." Hokanson said. "They went

August 2014

# The Mill Brook Preserve

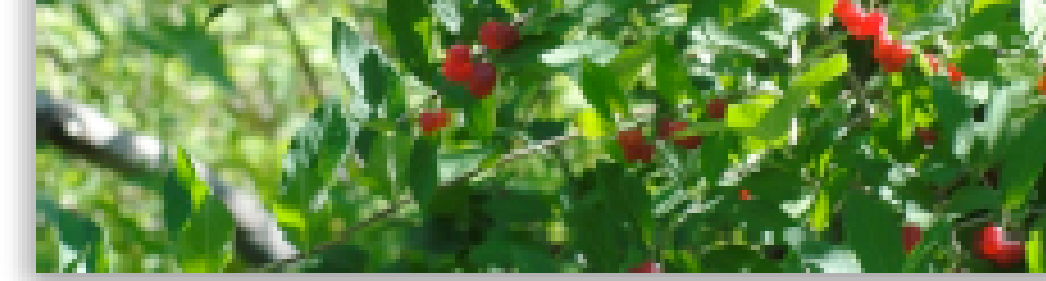
A Plan for Its Creation and Management



Town and Village of New Paltz  
Clean Water and Open Space  
Protection Commission

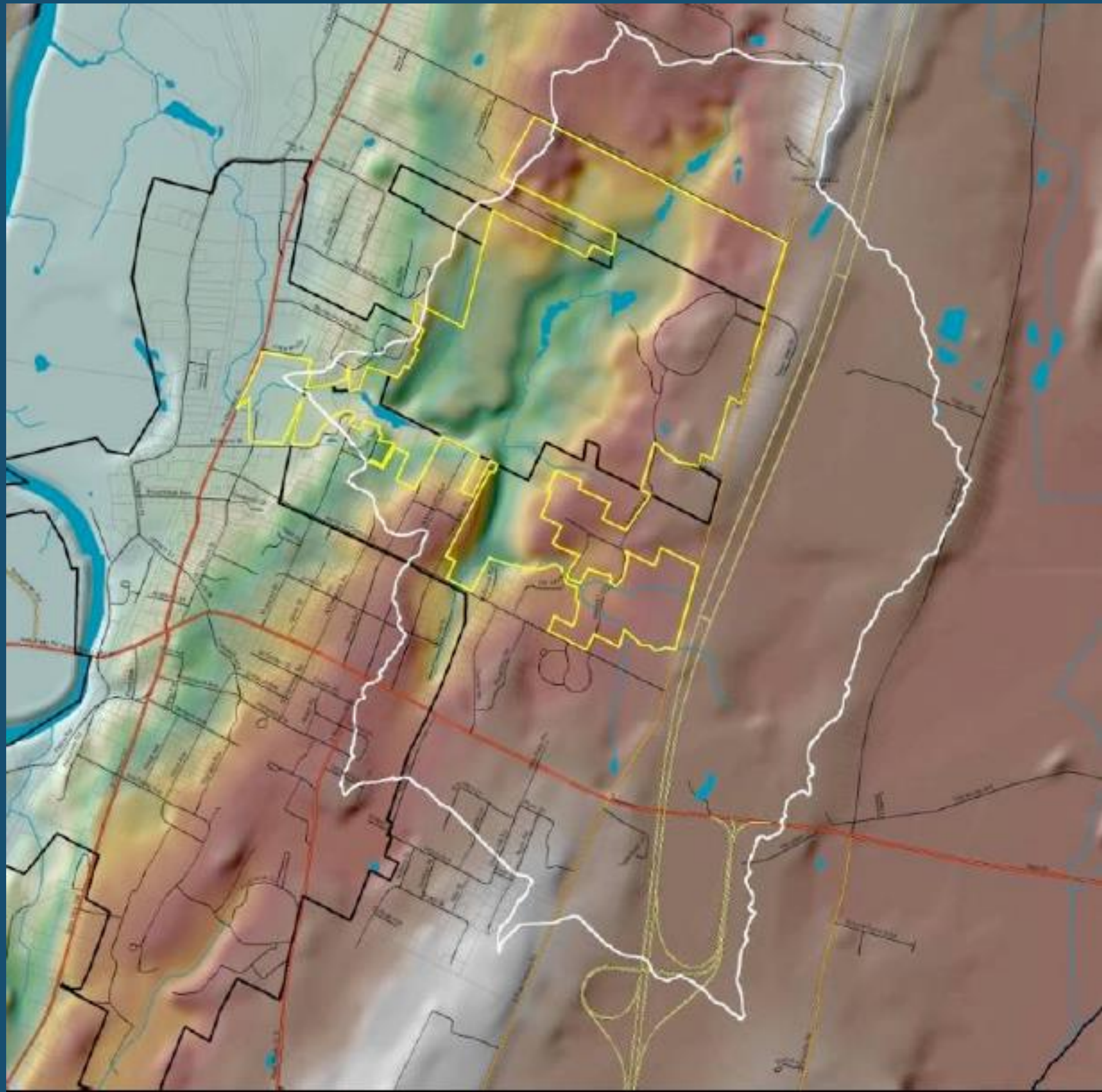
## Goals and Principles

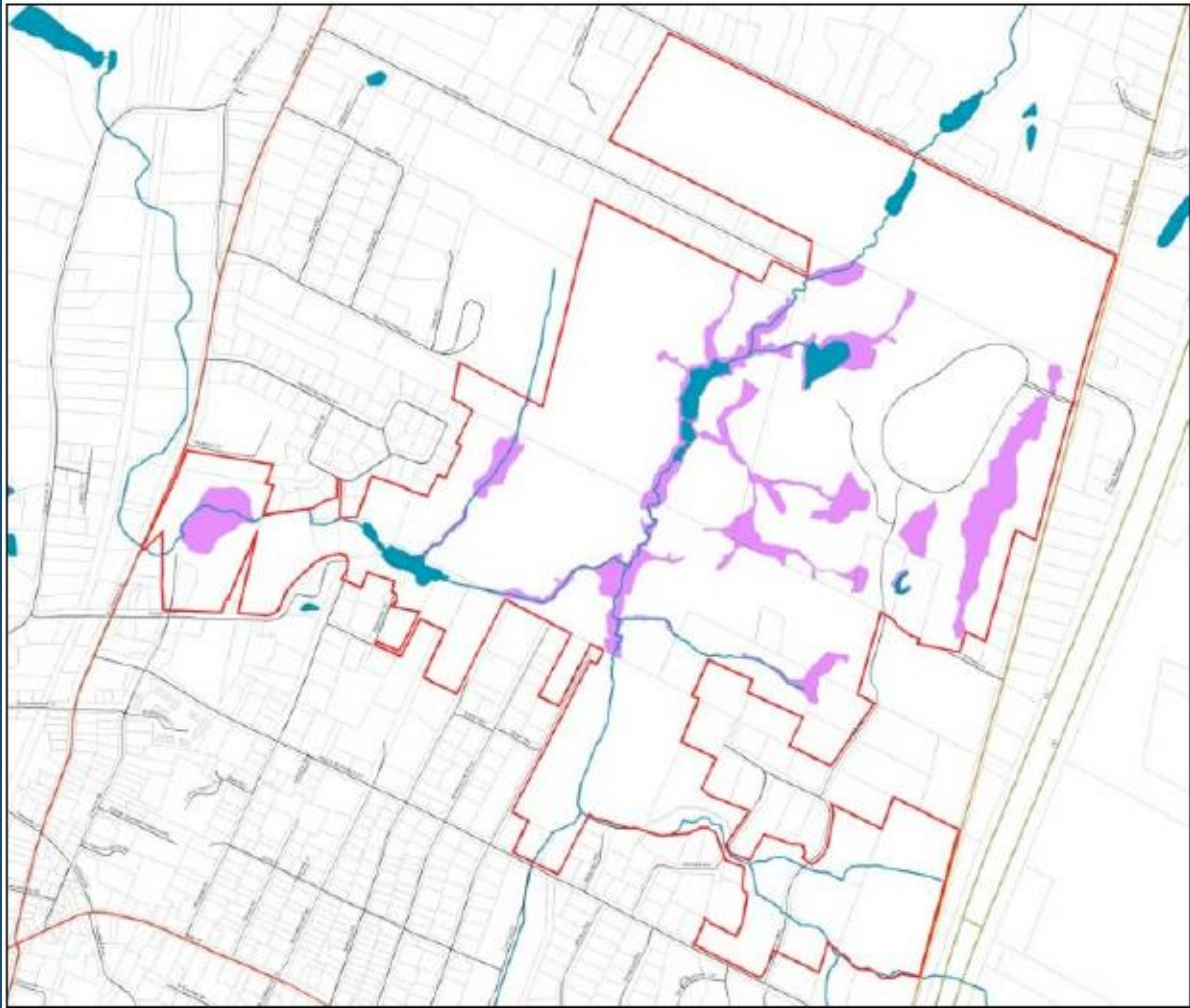
The goals for the proposed Mill Brook Preserve are to:



1. Preserve and restore where possible, ecological communities historically present and appropriate to the site and to maintain the maximum overall aquatic and upland diversity possible in the sub-watershed.
2. Minimize pollutant loads in the stream water compared to current levels and control invasive species.
3. Allow no net loss of wetlands.
4. Maintain corridors and linkages to natural communities by connecting wetlands, riparian buffers, and adjacent upland woodlands in the sub-watershed to meet recreation, water quality and biodiversity needs. In order to accomplish this, land beyond the borders of the proposed preserve must be considered.
5. Promote public awareness of and involvement (including recreational uses) in the proposed Mill Brook Preserve. Pedestrian access between Moriello Park and the core preserve area is a critical link between the Preserve, the Park, and beyond to the Wallkill Valley Rail Trail.
6. Maintain the “wilderness in the city” feeling of the area as this is an important character of the Mill Brook area that contributes significantly to the cultural and recreational experience.
7. Plan for appropriate transitions and buffers along edges to minimize conflicts.
8. Monitor and keep records and inventories to assure long-term effective management.
9. Ensure that infrastructure elements are designed to protect the natural and cultural resources, to protect the safety of users, to minimize adverse physical, biological, and aesthetic impacts, to enhance biological diversity, and to be sustainable and environmentally friendly.
10. Ensure that all design and management activities are adaptive, evolving in an iterative way to accommodate new knowledge and data about the Preserve.



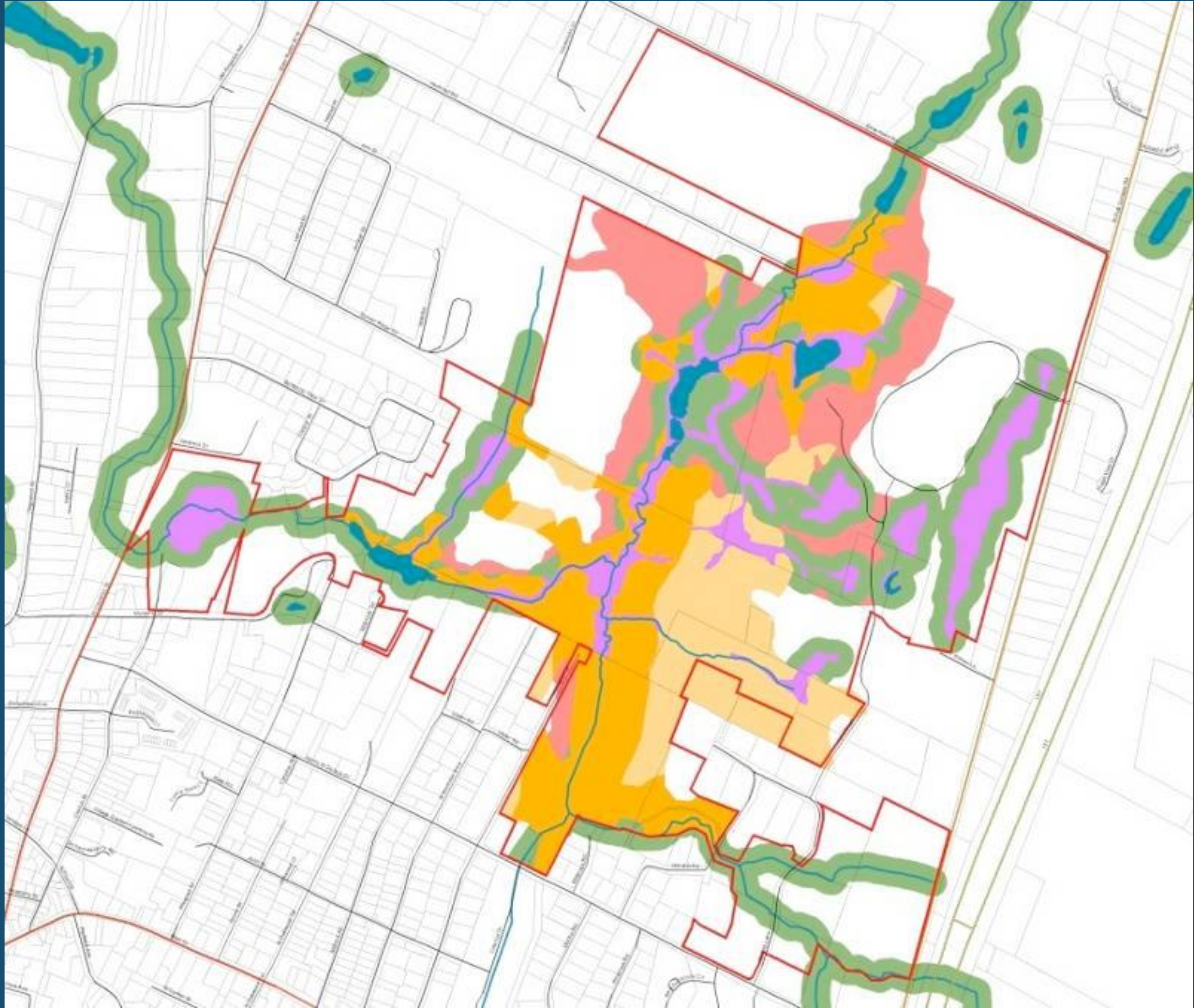




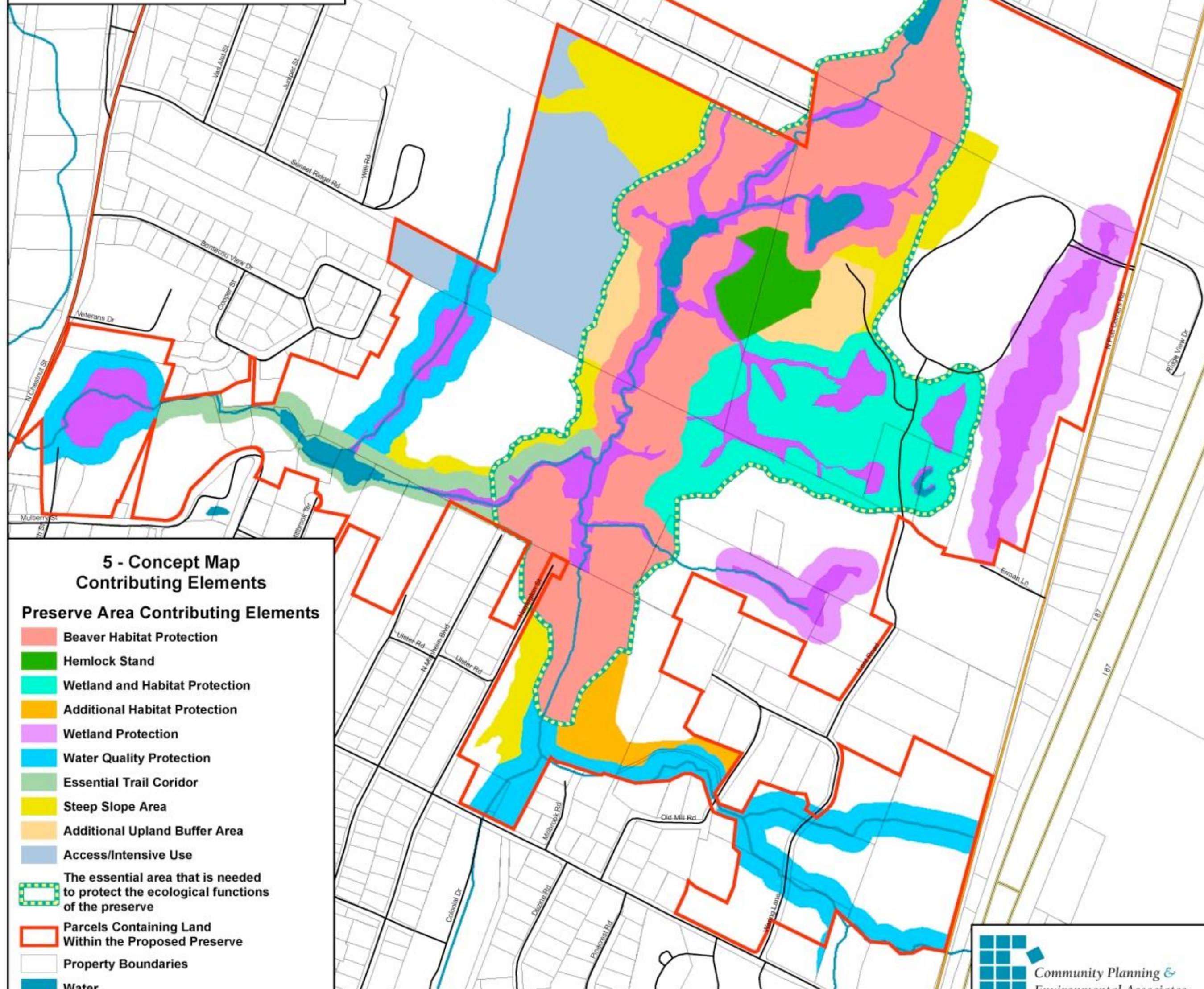








# Proposed Mill Brook Preserve New Paltz, NY



## 5 - Concept Map Contributing Elements

### Preserve Area Contributing Elements

- Beaver Habitat Protection
- Hemlock Stand
- Wetland and Habitat Protection
- Additional Habitat Protection
- Wetland Protection
- Water Quality Protection
- Essential Trail Corridor
- Steep Slope Area
- Additional Upland Buffer Area
- Access/Intensive Use
- The essential area that is needed to protect the ecological functions of the preserve
- Parcels Containing Land Within the Proposed Preserve
- Property Boundaries
- Water
- Streams
- Wetlands

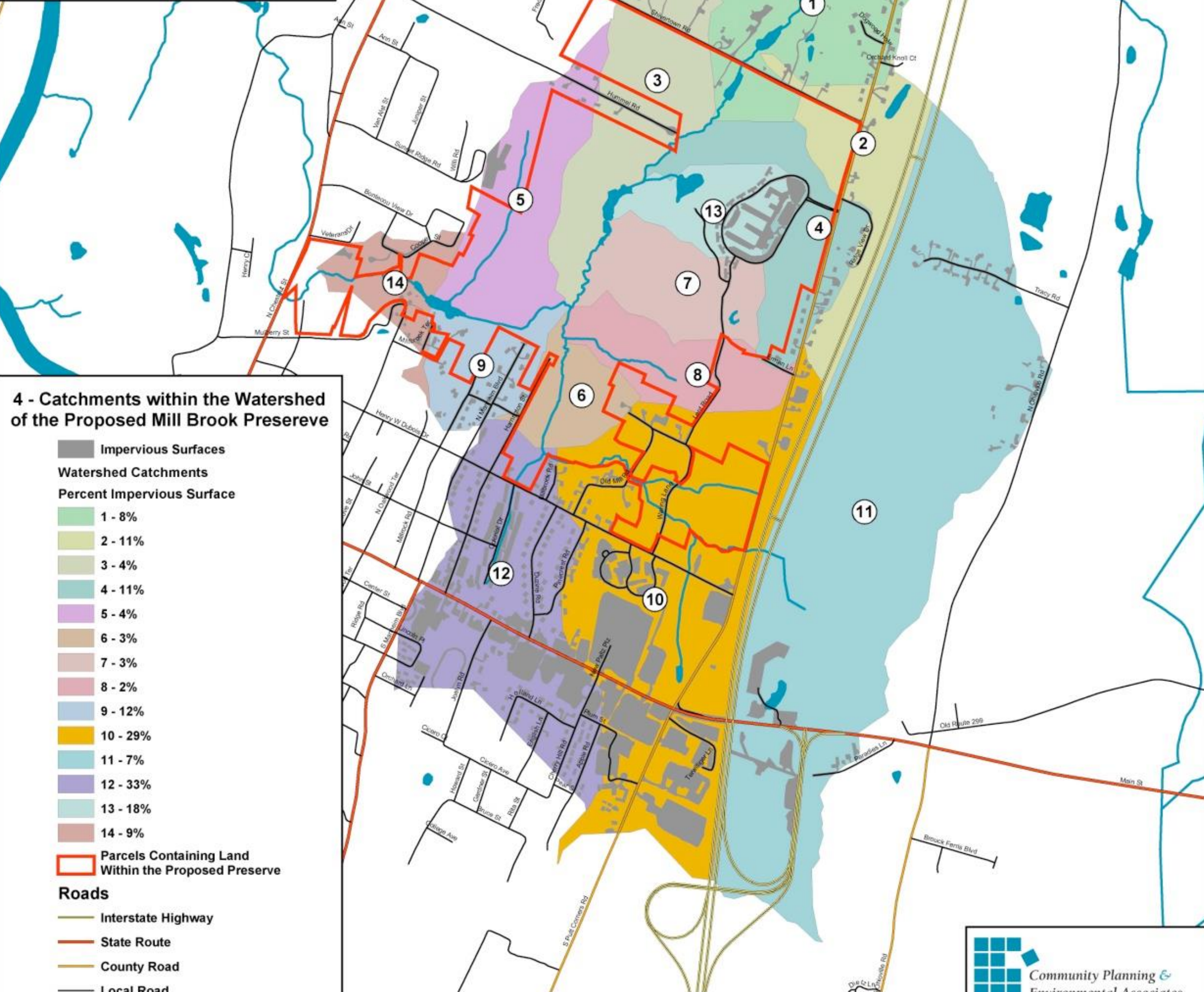
Draft Map Date: 11-29-2010

0 500 1,000 2,000 Feet



**Community Planning & Environmental Associates**  
 Nan Stolzenburg, AICP - [www.planningbetterplaces.com](http://www.planningbetterplaces.com)  
 152 Stolzenburg Road, Berns, NY 12023  
 Don Meltz, Planning and GIS - [www.donmeltz.com](http://www.donmeltz.com)

# Proposed Mill Brook Preserve New Paltz, NY



## 4 - Catchments within the Watershed of the Proposed Mill Brook Preserve

Impervious Surfaces

Watershed Catchments

Percent Impervious Surface

- 1 - 8%
- 2 - 11%
- 3 - 4%
- 4 - 11%
- 5 - 4%
- 6 - 3%
- 7 - 3%
- 8 - 2%
- 9 - 12%
- 10 - 29%
- 11 - 7%
- 12 - 33%
- 13 - 18%
- 14 - 9%

Parcels Containing Land Within the Proposed Preserve

Roads

- Interstate Highway
- State Route
- County Road
- Local Road
- Water
- Streams

Draft Map Date: 11-29-2010

0 500 1,000 2,000 Feet



**Community Planning & Environmental Associates**

Nan Stolzenburg, AICP - [www.planningbetterplaces.com](http://www.planningbetterplaces.com)  
 152 Stolzenburg Road, Bernie, NY 12023  
 Don Meltz, Planning and GIS - [www.donmeltz.com](http://www.donmeltz.com)

Politics & Government

## Village of New Paltz to purchase 64.5-acre parcel to complete core of Mill Brook Preserve

by [Frances Marion Platt](#) / July 30, 2015 / 0 comments

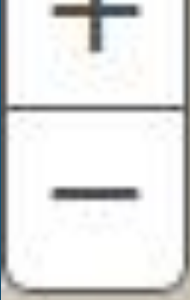
[Share 0](#)

[Tweet](#)

[Email](#)

[Print](#)







St-Harcourt  
Wildlife  
Sanctuary

Launch

Palitz

87

Huguenot St

Old Kingston Rd

Ann St

Hummel Rd

Shivertown Rd

Van Alst St

Juniper St

Sunset Ridge Rd

Willie Rd

Bonticou View Dr

Cooper St

Moriello  
Park

Mulberry St

Henry W Dubois Dr

Prospect St

Broadhead Ave

Church St

N Front St

Ter

ck Rd

nheim Blvd

Rd

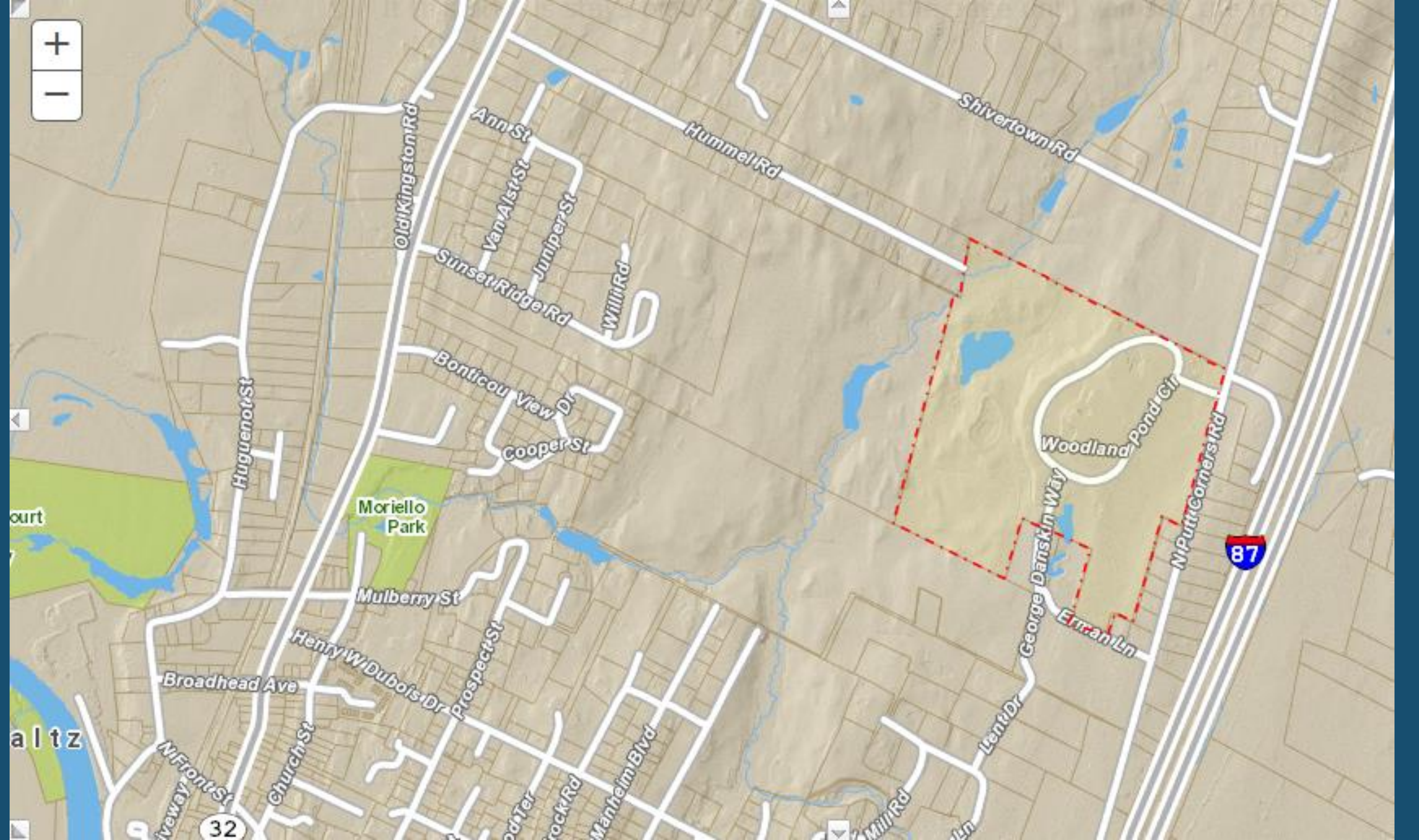
lent Dr

George Danskin Way

Erman Ln

Woodland Pond Cir

N Putt Corners Rd



court


altz

32

87



# Mill Brook Preserve

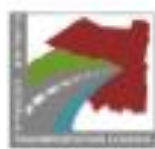
 

## A Nature Sanctuary Preserved Forever In the Heart of New Paltz

Offering a richness of wilderness, wetlands and wildlife, Mill Brook Preserve is a treasure of nature nestled in the heart of our community. With its streams, ponds, and upland habitats, the Preserve is a beautifully rustic setting for the quiet enjoyment of its rich ecology. Its contributions to the quality of life include not only wildlife habitat, but water pollution prevention, a unique “wilderness in the city,” much like Central Park, due to its location inside the Town of New Paltz.

The lands surrounding the tributaries of the Mill Brook itself comprise one of the last remaining undeveloped areas in New Paltz. Wet meadows, marshes, wooded swamps, beaver ponds, woodland pools, and floodplains in the Mill Brook Preserve provide recreational and cultural amenities as well as

# Ulster County Multi-Use Trail System



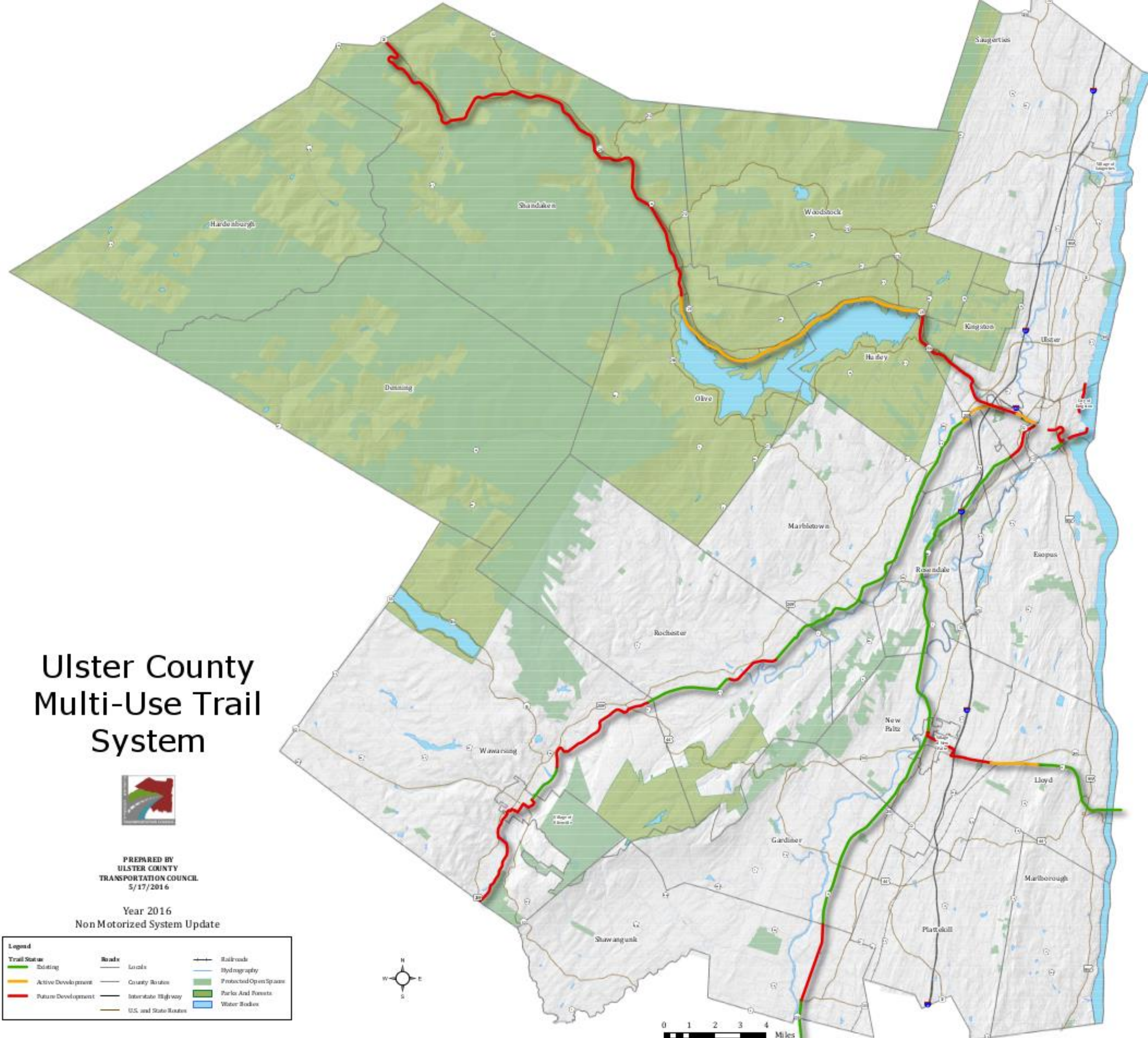
PREPARED BY  
ULSTER COUNTY  
TRANSPORTATION COUNCIL  
5/17/2016

Year 2016  
Non Motorized System Update

Legend		
<b>Trail Status</b>	<b>Roads</b>	<b>Railroads</b>
Existing	Local	Hydrography
Active Development	County Route	Protected Open Space
Future Development	Interstate Highway	Parks And Forests
	U.S. and State Routes	Water Bodies



0 1 2 3 4 Miles







Regional Economic  
Development Councils



Governor Andrew M. Cuomo

Regional Economic Development Council

# Awards



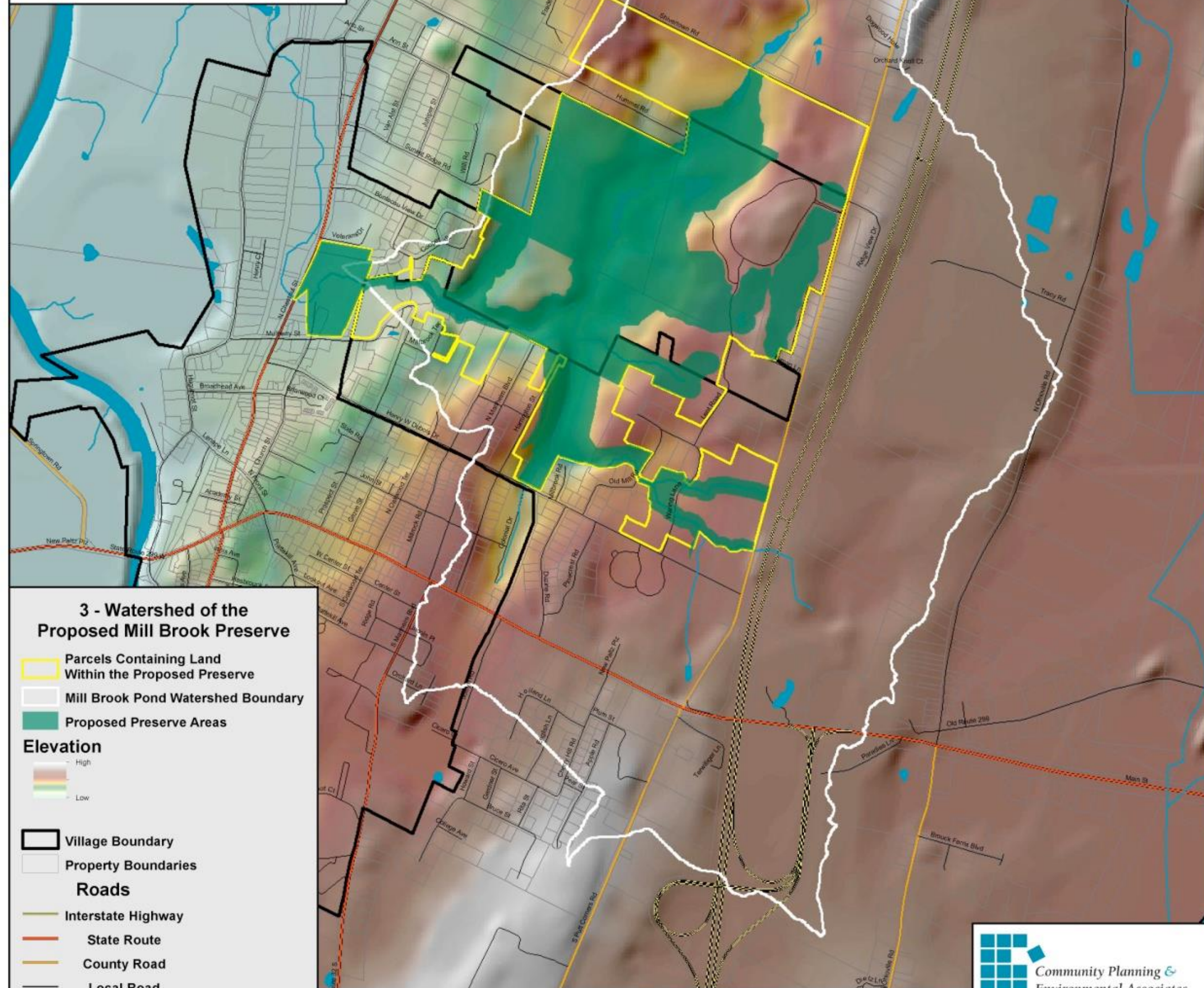
2016



<b>CFA #</b>	<b>County</b>	<b>Applicant</b>	<b>Project Title</b>	<b>Description</b>	<b>Agency/ Program</b>	<b>Award</b>
63414	Ulster	Village of New Paltz	Village of New Paltz Sanitary Sewer Improvements	Funds will be used to install new sewer lines and manholes along North Chestnut Street and in the Village owned Rail Trail.	HCR CDBGPIPF	\$750,000
63415	Ulster	Village of New Paltz	Consent Order Compliance DEC Engineering Planning Grant Project	The Village of New Paltz will complete an engineering report to identify all deficient sewers and manholes and sources of inflow and infiltration.	DEC EPG	\$99,888
65603	Ulster	Village of New Paltz	Mill Brook Preserve Development	The Village of New Paltz will build pedestrian/ bike path bridges and amenities and form 3.3+ miles of recreational trails on public lands in the heart of New Paltz. The project will fund a landscaped parking area and trailhead with a kiosk, two types of trails, signage, benches, educational panels and other improvements. Within the network of trails, there will be a 0.5+/- mile segment of universally accessible trail constructed that supports use by persons of all ages and abilities.	OPRHP PKS D	\$317,997
				AKDE... Ulster... New Paltz...		



# Proposed Mill Brook Preserve New Paltz, NY



**3 - Watershed of the Proposed Mill Brook Preserve**

- Parcels Containing Land Within the Proposed Preserve
- Mill Brook Pond Watershed Boundary
- Proposed Preserve Areas

**Elevation**

- High
- Low

- Village Boundary
- Property Boundaries

**Roads**

- Interstate Highway
- State Route
- County Road
- Local Road

- Water
- Streams

Draft Map Date: 11-29-2010

0 500 1,000 2,000 Feet



**Community Planning & Environmental Associates**

Nan Stolzenburg, AICP - [www.planningbetterplaces.com](http://www.planningbetterplaces.com)  
 152 Stolzenburg Road, Berne, NY 12023  
 Don Meltz, Planning and GIS - [www.donmeltz.com](http://www.donmeltz.com)

