

A decorative grid pattern of small squares, arranged in a triangular shape that tapers to the right, is located on the left side of the page.

Nature Across Boundaries

NOVEMBER 6, 2017

Keeping Lands and Water Connected

Collaborative Conservation in a Climate Resilient Landscape



- How did the Hudson to Housatonic (H2H) Regional Conservation Partnership form?
- What are we connecting and how do we work?
- Opportunities and barriers to collaborating and conserving land at scale.



New York

Dutchess Co.

Housatonic River

Connecticut

Hudson River

Putnam Co.

★ Housatonic Valley Assoc.

★ Highstead & Fairfield Co. RCP

Westchester Co.

Watershed Ag. Council ★ ★ ★

Westchester Land Trust

Mianus River Gorge

Fairfield Co.

Pennsylvania

New York

Source: Esri, DigitalGlobe, GeoEye, Earthstar Geographics, CNES/Airbus DS, USDA, USGS, AEX, Getmapping, Aerogrid, IGN, IGP, swisstopo, and the GIS User Community

Regional Conservation Partnerships are established by individuals and organizations seeking to achieve greater conservation and stewardship objectives through coordination and teamwork than they could do on their own.



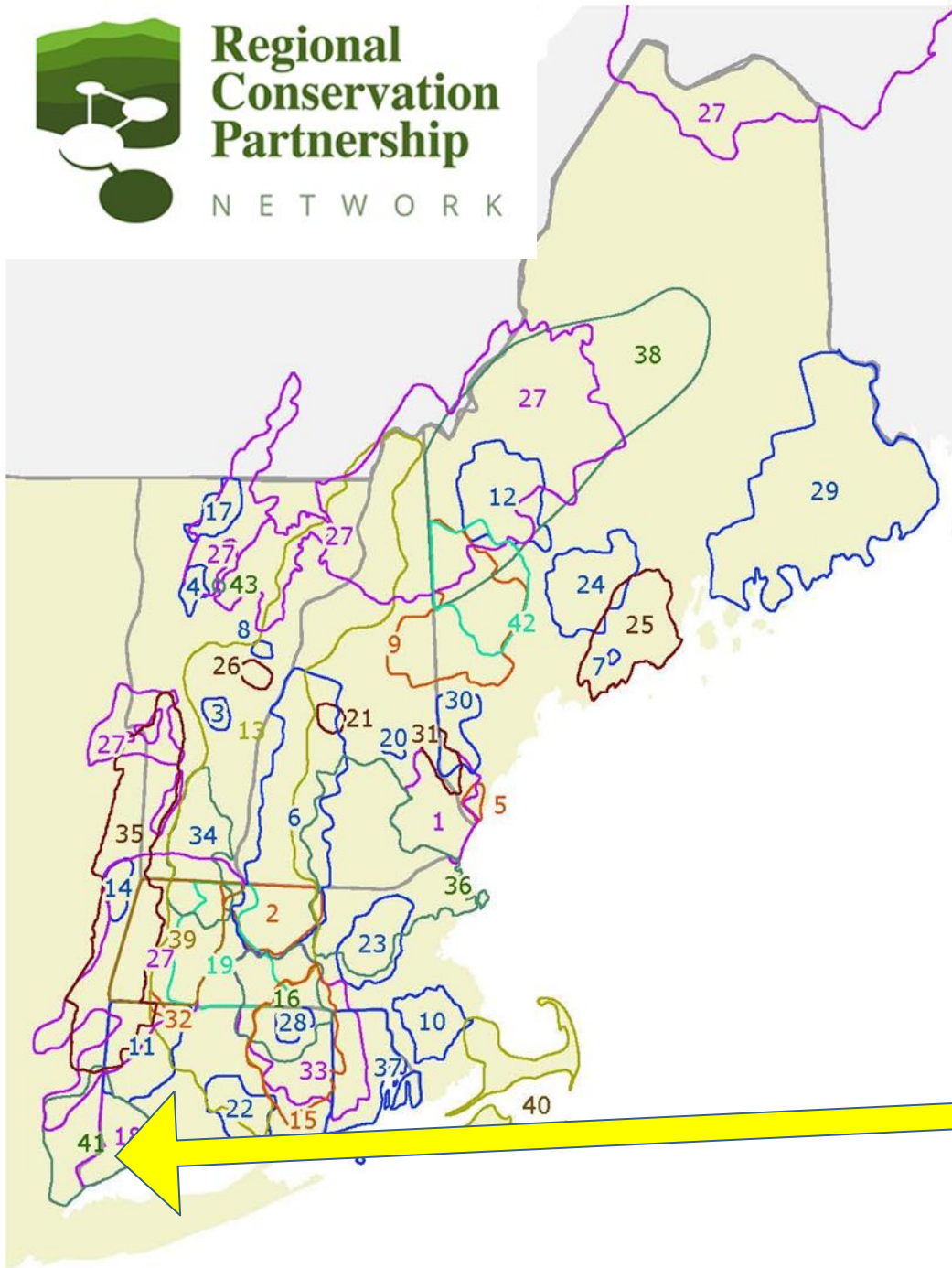
Hudson to Housatonic

Spanning the Rivers



Regional Conservation Partnership

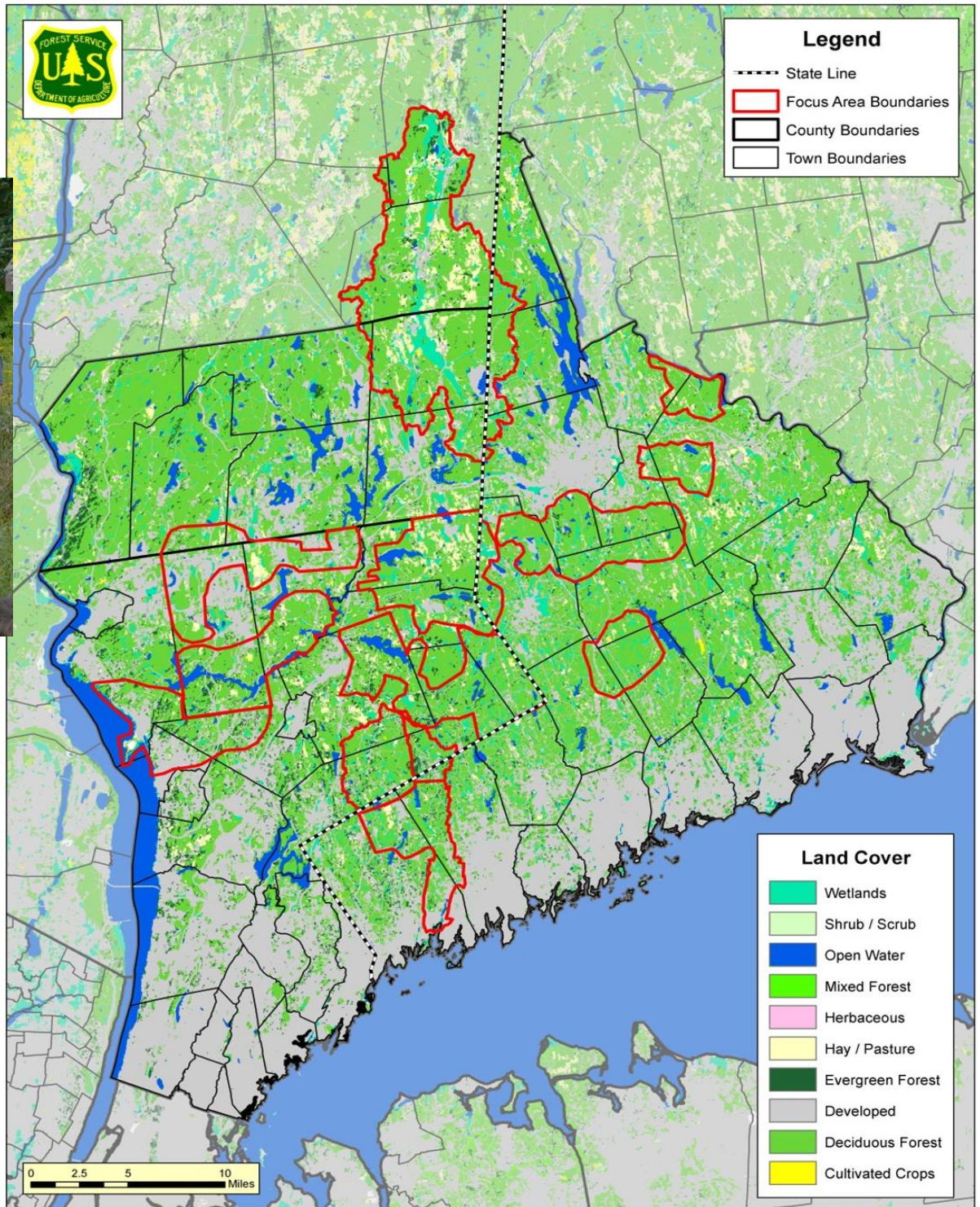
NETWORK



- 1 - Great Bay Resource Protection Partnership
- 2 - North Quabbin Regional Landscape Partnership
- 3 - Chateaugay No Town Conservation Project
- 4 - Chittenden County Uplands Conservation Project
- 5 - Mt. Agamenticus to the Sea Conservation Initiative
- 6 - Quabbin to Cardigan Partnership
- 7 - River-Link
- 8 - Orange County Headwaters Project
- 9 - Upland Headwaters Alliance
- 10 - Resilient Taunton Watershed Network
- 11 - Litchfield Hills Greenprint Collaborative
- 12 - High Peaks Initiative
- 13 - Friends of the Silvio O. Conte National Fish and Wildlife Refuge
- 14 - Rensselaer Plateau Working Forest Initiative
- 15 - Thames River Basin Partnership
- 16 - Mass-Conn Sustainable Forest Partnership
- 17 - Cold Hollow to Canada Forest Link Project
- 18 - Fairfield County Regional Conservation Partnership
- 19 - Forever Farmland Initiative
- 20 - Belknap Range Conservation Coalition
- 21 - Newfound Land Conservation Partnership
- 22 - Lower CT River and Coastal Region Land Trust Exchange
- 23 - West Suburban Conservation Council
- 24 - Kennebec Woodland Partnership
- 25 - 12 Rivers Conservation Initiative
- 26 - Taylor Valley Conservation Project
- 27 - Staying Connected Initiative
- 28 - Quiet Corner Initiative
- 29 - Downeast Conservation Network
- 30 - Forest Works!
- 31 - Salmon Falls Watershed Collaborative
- 32 - Sandy Brook Conservation Corridor
- 33 - Southern New England Heritage Forest Partnership
- 34 - MA-VT Woodlands Partnership
- 35 - Berkshire-Taconic Regional Conservation Partnership
- 36 - Merrimack Conservation Partnership
- 37 - Rhode Island Woodland Partnership
- 38 - Maine Mountain Collaborative
- 39 - Berkshire Wildlife Linkage Partnership
- 40 - Massachusetts Coastal Pine Barrens Partnership
- 41 - Hudson to Housatonic Regional Conservation Partnership
- 42 - Maine West
- 43 - Shutesville Hill Wildlife Corridor Project



Hudson to Housatonic





Hudson to
Housatonic

Map
Conservation
Focal Areas &
ID Priority
Parcels

Build Database
of Priority
Parcel
Landowners
for Each Focal
Area

Develop Work
Plan to Engage
Targeted
Landowners

Design
Invitations to
Draw Targeted
Landowners to
Woods Forum

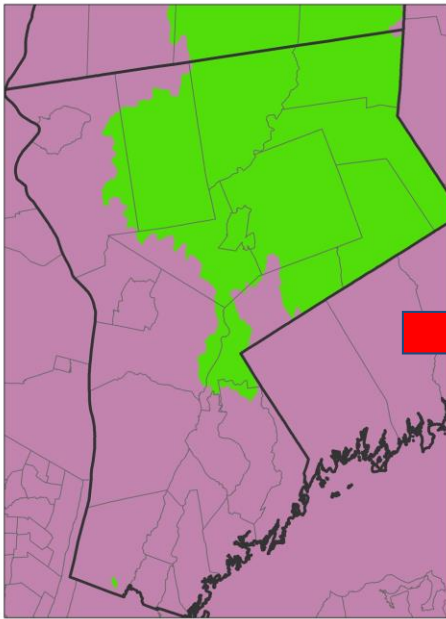
STEWARDSHIP

- Backyard Birds Workshop
- Woodland Management Event
- Discuss Funding with NRCS Staff
- Landowner Applies for EQIP Funding for Upland Wildlife Habitat Creation

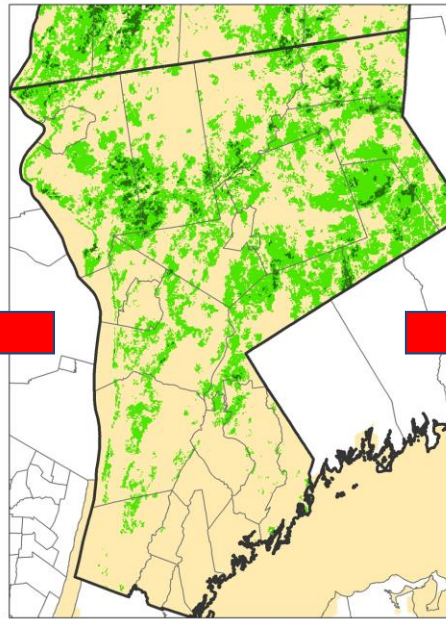
CONSERVATION

- Estate Planning Workshop
- Cultivation Event with Current Easement Holders & Ambassadors
- Property Visit by Local Land Trust
- Landowner Donates a Conservation Easement

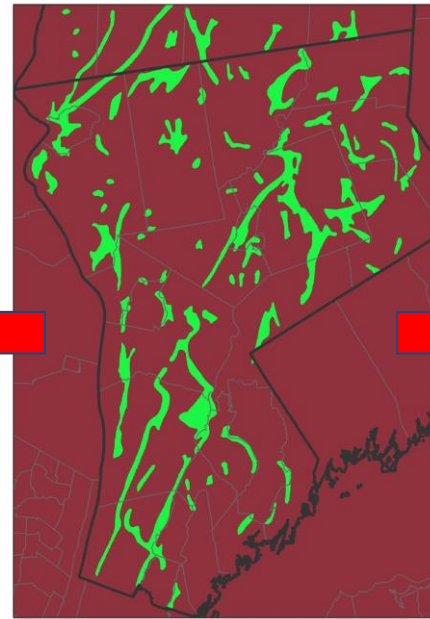
AA/AAS Watersheds



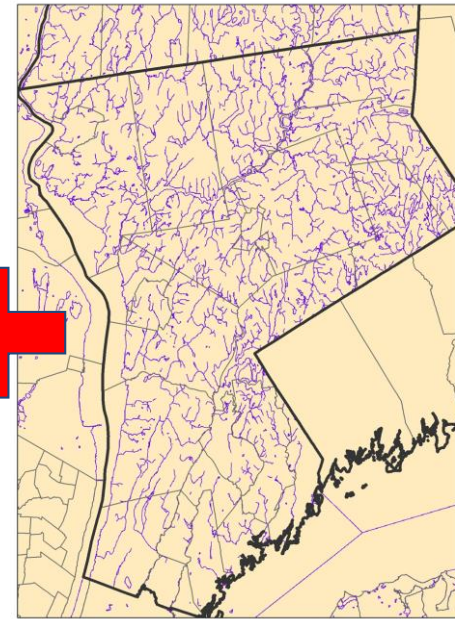
Climate Resiliency



Aquifers

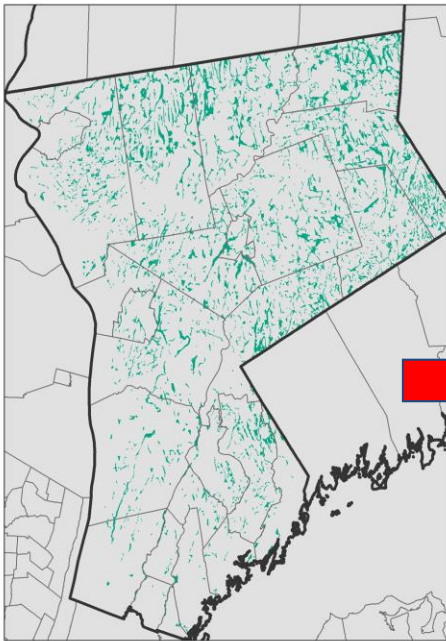


Surface Waters and Buffers

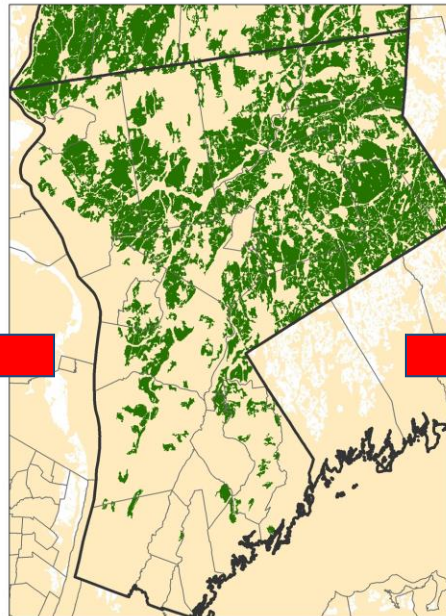


Co-Occurrence Model to Identify H2H Priority Parcels

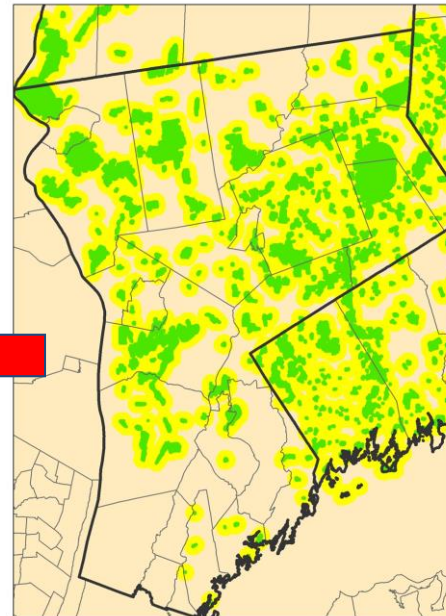
Hydric Soils



Large Forest Blocks



Proximity to Protected Lands





**YOU LIVE IN A
SPECIAL PLACE**
FIND OUT WHY
SUNDAY, AUGUST 9TH • 10-11:30AM



SUNDAY, SEPTEMBER 20TH • GOT BIRDS?
JOIN US & DISCOVER
WHOOOOO SHARES YOUR BACKYARD!

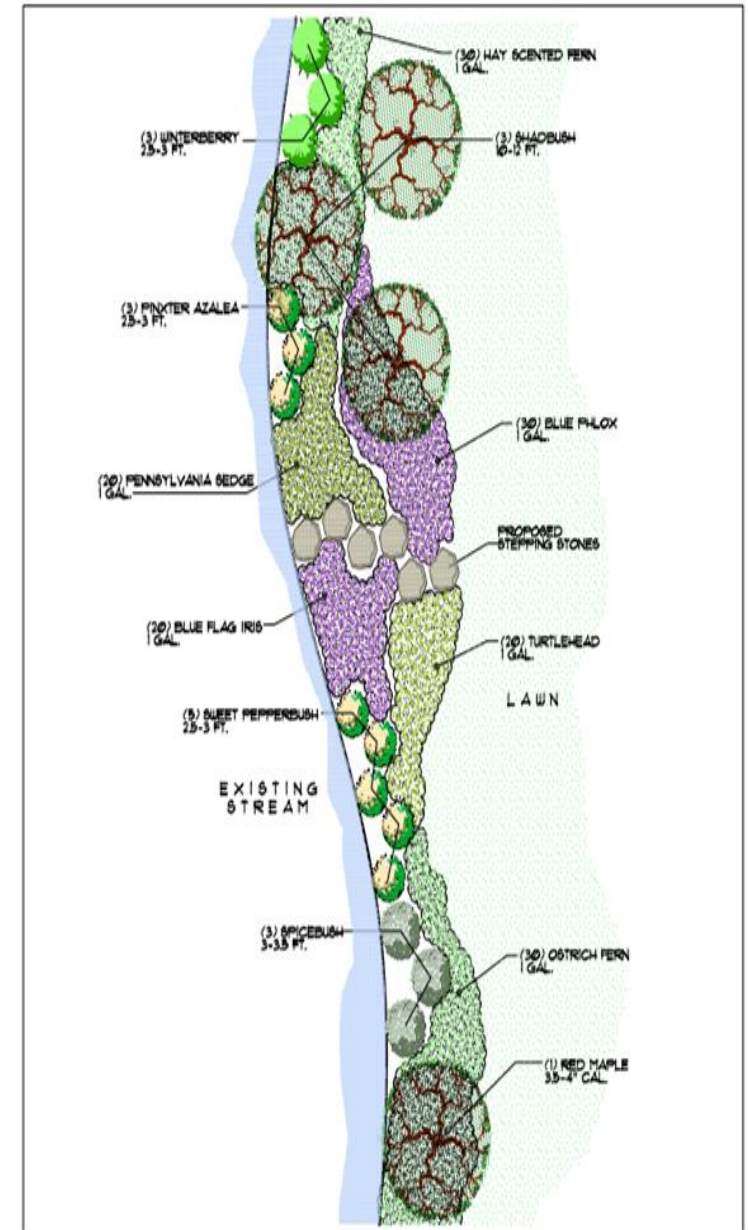


GUIDED STREAM WALK AT ANGLE FLY PRESERVE • SUNDAY, JULY 12TH
DISCOVER THE WATERWAYS THAT
MAKE OUR COMMUNITY UNIQUE



**WHAT'S GOING ON
IN YOUR BACKYARD?**

BUFFERS FOR BEAUTY A GUIDE FOR PLANTING IN YOUR WETLAND BUFFER





OUTCOMES FROM THE 2 YEAR GRANT-FUNDED INITIATIVE



- Landowners targeted: 3,500
- Event invites extended: 10,000 +
- Event attendees: 485
- Landowner visits: 39 (34 pending)
- Stewardship actions: 121

Actions scheduled: 52

- Land conservation consultation: 20
- Acres protected: 217

Acres in play: 1,000+

“

IN TEN YEARS WE WILL BE PROUD THAT WE...

Protected Land

Engaged
Landowners

Created a Culture of
Conservation

Formed an Active & Trusting



OUR GREATEST HURDLES

Funding

Public Awareness, Education

Pace of Success

Lack of Incentives, Regulation

Capacity (staff & volunteer)





VISION

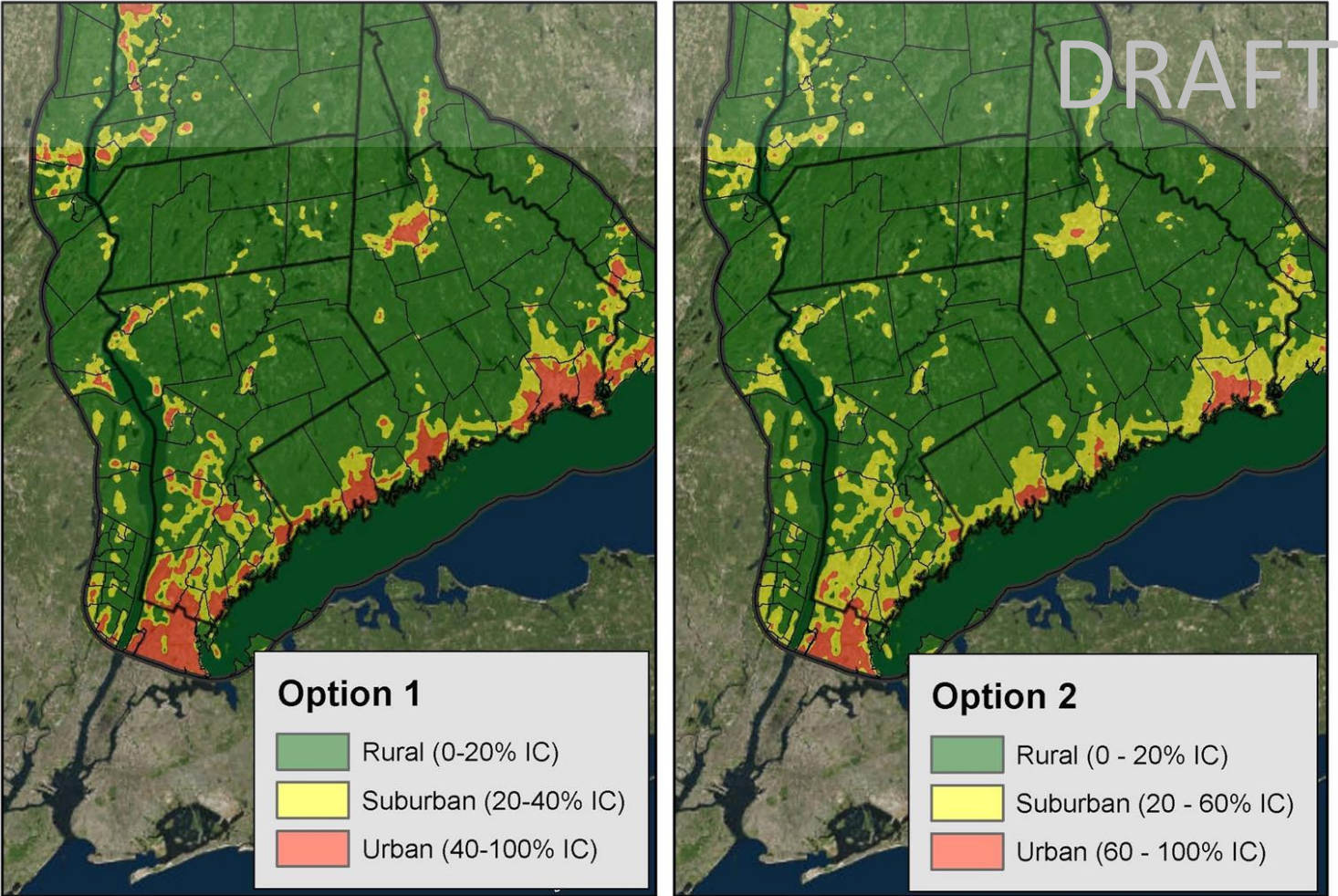
A landscape mosaic abundant in forests, farms, wildlands, and waterways of the Hudson to Housatonic Region enriches the quality of life for all who live, work and play here.



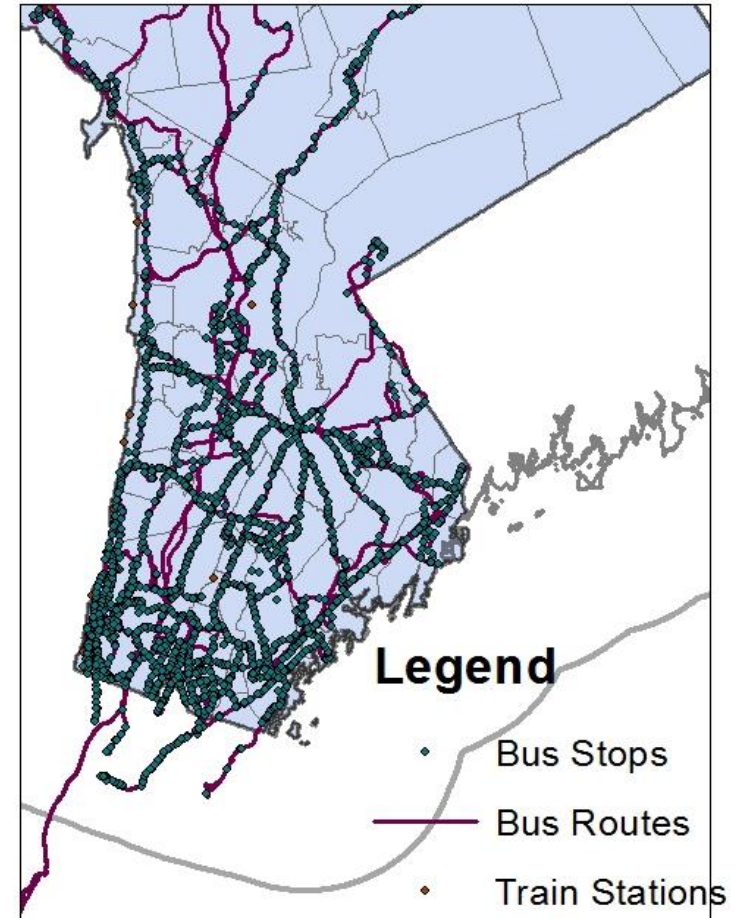
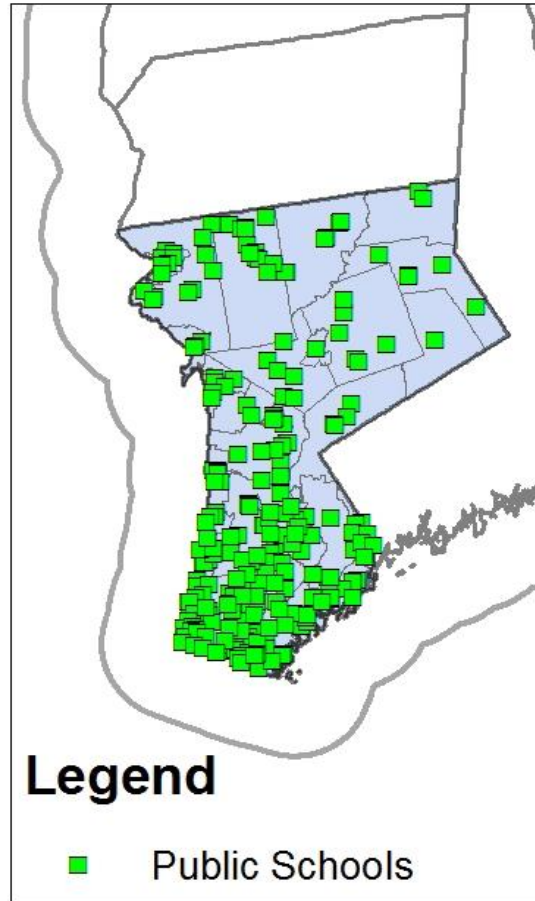
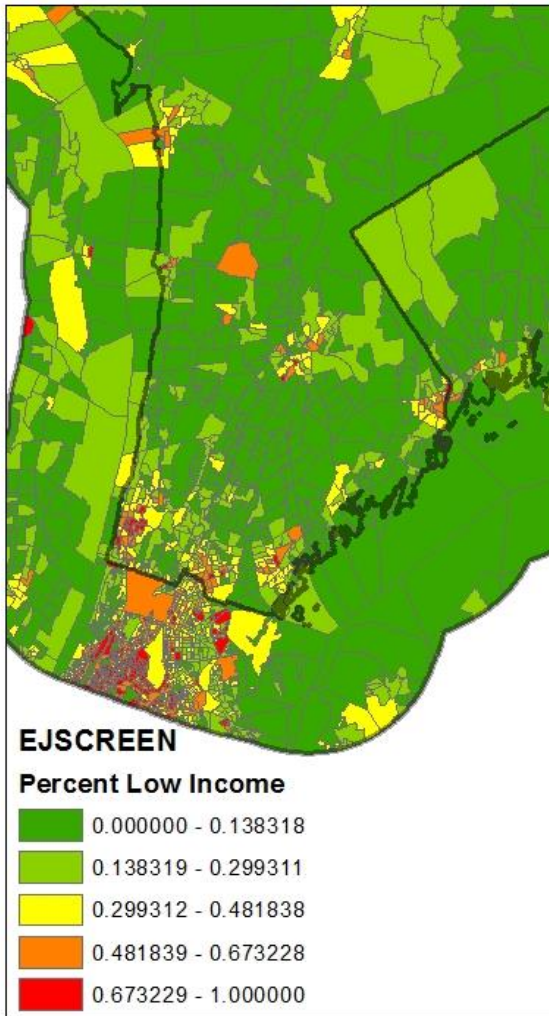
GOALS

1. Increase the pace of land protection so that XX%* of our priority wildlife habitats, parks, trails, gardens, and farms are linked to others by 2060.
2. Make it easy for municipalities and community groups to conserve and steward land together.
3. Engage landowners to take stewardship and land protection actions.
4. Improve the knowledge and capacity of H2HRCP members so they can achieve their shared mission.

H2H CURRENT PROJECT: Defining Urban, Suburban, and Rural



H2H CURRENT PROJECT: Urban Co-occurrence Modeling



New England: Aquarion Water Company, Aspetuck Land Trust, Bethel Land Trust, Brookfield Open Space Legacy, Inc., CT-DEEP, Fairfield County Regional Conservation Partnership, Greenwich Audubon, Greenwich Land Trust, Housatonic Valley Association, Highstead, Redding Land Trust, Newtown Forest Association, Norwalk River Watershed Assoc., Ridgefield Conservation Commission, Ridgefield Land Conservancy, Wilton Land Conservation Trust, Yale University, Stamford Land Conservation Trust.

New York: Bedford Audubon Society, Friends of the Great Swamp, Mianus River Gorge, New York State Department of Environmental Conservation, Native Plants Center, North Salem Conservation Advisory Council, North Salem Open Land Foundation, Oblong Land Conservancy, Pound Ridge Land Conservancy, Putnam County Land Trust, Saw Mill River Audubon, Somers Land Trust, Teatown Lake Reservation, The Invasives Project – Pound Ridge, Yorktown Advisory Committee on Open Space, Yorktown Land Trust, Watershed Agricultural Council, Westchester County, Westchester Land Trust.

Kara H. Whelan

Vice President, Westchester Land Trust & H2HRCP Co-Coordinator

Kara@westchesterlandtrust.org or 914.234.6992 ext. 12

WWW.H2HRCP.ORG

